



## **On-line PICASSO PROJECT**

**Comprehensive Catalogue Raisonné  
Prof. Dr. Enrique Mallen**

**1900**



**Le peintre Ricard Opisso.** Barcelona. [December/1899~]  
[January]/1900. Charcoal pencil & colored background. 31 x 22 cm.  
Juan Antonio Samaranch Collection, Barcelona.

**OPP.00:004**; P.I:401; PP.9900:064; Z.I:18; AC.09:111p; AC.46:7;  
BA.00a\*:n/a; EM.55:7p; EV.14\*:66p; JP.66:27; TO.95a\*:41

---

**Portrait d'homme.** Barcelona. [December/1899~]  
[January]/1900. Conté crayon colored with turpentine on  
paper. 50,5 x 33 cm. Museo Picasso, Málaga. On temporary  
loan from Fundación Almine & Bernard Ruiz-Picasso para el  
Arte.

**OPP.00:021**; P.I:391; PP.9900:049; Z.VI:248; BA.00a\*:n/a;  
GA.00\*:1; GM.11\*:6; MG.04b\*:14; NC.17\*:9; PP.20\*:35





**Portrait d'Eveli Torent.** Barcelona. [December/1899~] [January]/1900. Charcoal & watercolor. 46 x 25,5 cm. The Picasso Estate.

**OPP.00:034**; P.I:390; PP.9900:047; Z.XXI:117; BA.00a\*:n/a

---

**Portrait de Daniel Masgoumeri.** Barcelona. [December/1899~] [January]/1900. Charcoal & watercolor on paper. [48,5 x 31,2] 47,5 x 30,5 cm. Marina Picasso Collection. (Inv 00134). Courtesy Galerie Jan Krugier, Geneva.

**OPP.00:037**; P.I:385; PP.9900:042; Z.XXI:87; BA.00a\*:n/a; GC.96:49p; JG.84\*:79; JR.91:146p; MP.81\*:13





**Portrait de Jaume Sabartés ('Poeta decadente')**. Barcelona. [December/1899~] [January]/1900. Charcoal & essence on laid watermarked paper. 48,3 x 32,2 cm. Museu Picasso, Barcelona. Gift of Jaume Sabartés, 1962.

**OPP.00:038**; DB.I:6; MPB:70.232; P.I:386; PP.9900:048; Z.XXI:159; AR.57\*:2; AR.57\*:3; BA.00a\*:n/a; BA.03a\*:23; BA.61b\*:1; BA.90c\*:n/a; BL.91\*:28; BP.62:47; BW.13:93p; CL.06\*:n/a; CR.98:39p; EC.16\*:18; EV.08:49; EV.10\*:257p; GM.11:33p; GP.96:64p; GR.90:124p; GT.81\*:7; JF.94a:6; JG.84\*:76; JM.93:20p; JP.66:25; JR.91:116p; LO.56a\*:21p; MA.17b:44p; MM.97\*:30; PA.01b\*:n/a; PJ.02:98p; RS.88:29p; TK.02\*:n/a; TO.95a\*:62; TO.95b:24p; TO.97\*:127; TU.86\*:n/a; UP.00:45; WS.11:22p

**Portrait d'homme de profil**. Barcelona. [December/1899~] [January]/1900. Charcoal & watercolor on paper. [47,5 x 30,5] 48,9 x 32 cm. Christie's. #106, 2438, 05/05/11.

**OPP.00:039**; P.I:392; PP.9900:050; Z.XXI:85; BA.00a\*:n/a





**Portrait d'homme debout avec barbiche.** Barcelona. [December/1899~] [January]/1900. Conté pencil colored with turpentine [Reverse of *Dessinateur et les curieux*]. 47 x 37 [38,4] cm. Sotheby's. #26, 05/11/94.

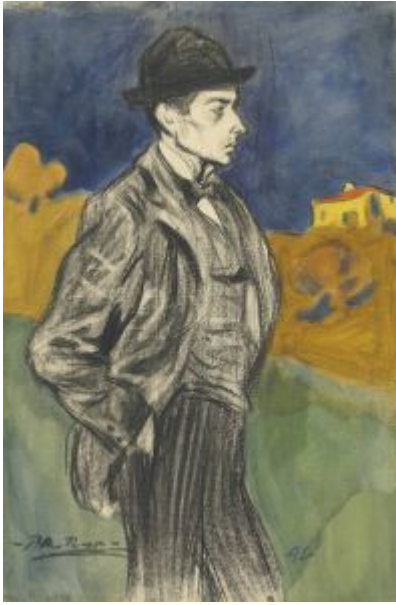
**OPP.00:040**; P.I.:396; PP.9900:054; Z.VI:287; BA.00a\*:n/a; JG.84\*:80; JP.96\*:20; JR.91:146p; MP.81\*:11; TO.95a\*:48

---

**Portrait d'homme.** Barcelona. [December/1899~] [January]/1900. Conté crayon & oil wash on paper. 48,5 x 32 cm. Private collection, Zurich.

**OPP.00:041**; P.I.:384; PP.9900:041; Z.VI:268; BA.00a\*:n/a; JR.91:146p; MM.97\*:B27; TO.95a\*:47





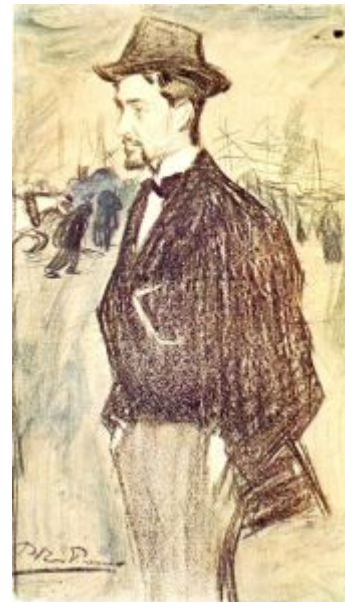
**Portrait d'homme de profil (Lluís Alemany)**. Barcelona. [December/1899~] [January]/1900. [Charcoal colored with turpentine] Gouache & charcoal on paper. [47,2 x 31,3] 47 x 31 cm. Christie's. #1, 13485, 02/28/17.

**OPP.00:042**; P.I:387; PP.9900:043; Z.VI:263; BA.00a\*:n/a; BS.81\*:63; JR.91:147p; TO.95a:29p; TO.96a:29p

---

**Portrait d'homme de profil**. Barcelona. [December/1899~] [January]/1900. Conté pencil colored with turpentine. 47,5 x 28,3 cm. The Picasso Estate.

**OPP.00:043**; P.I:388; PP.9900:044; Z.VI:254; BA.00a\*:n/a; JR.91:147p





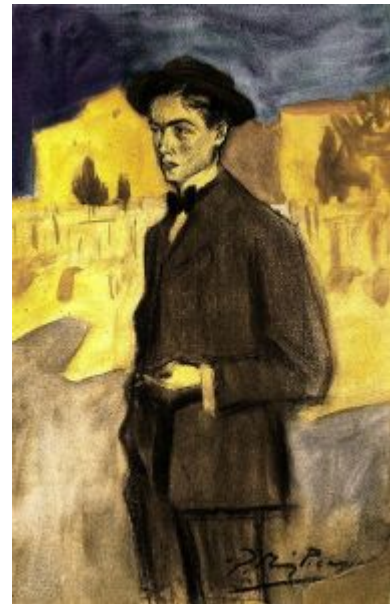
**Portrait de Carles Casagemas.** Barcelona. [December/1899~]  
[January]/1900. Charcoal & watercolor on paper. 40,5 x 28 cm.  
Erazuquin Collection, Sant Cugat del Vallès, Barcelona.

**OPP.00:044**; P.I:383; PP.9900:040; BA.00a\*:n/a; EV.14\*:123p;  
TO.95a\*:34

---

**Portrait de Joan Vidal i Ventosa.** Barcelona. [1899~]  
[January]/1900. Charcoal & watercolor on paper. [52,5 x 34,5]  
47 x 30 cm. Maurice Rheims Collection, Paris.

**OPP.00:057**; DB.I:3; P.I:425; PP.9900:088; Z.XXI:97;  
BA.00a\*:n/a; JR.91:147p; LY.53a\*:1; MJ.55\*:1; TO.95a\*:50





**Portrait de Eveli Torent (A mi amigo E. Torent).** Barcelona. [December/1899~] [January]/1900. Charcoal on paper. 48,8 x 32,3 cm. The Detroit Institute of Arts. (Inv 38.34). Dexter M. Ferry Jr. Fund.

**OPP.00:059**; DB.DI:4; P.I:406; PP.9900:071; Z.XXI:118; BA.00a\*:n/a; JR.91:146p; MM.78\*:25; MM.97\*:B24; TO.64\*:3

**Portrait de Joan B. Fonte.** Barcelona. [January]/1900. Charcoal & oil-based wash on cream paper. [52 x 33] 46,8 x 27,5 cm. Fogg Art Museum, Harvard University, Cambridge, MA. (Inv 1965.321). Bequest of Meta and Paul J. Sachs.

**OPP.00:060**; P.I:418; PP.9900:081; Z.XXI:119; BA.00a\*:n/a; CM.52\*:n/a; CM.65\*:n/a; JP.66:52; JR.91:147p; MM.97\*:B25





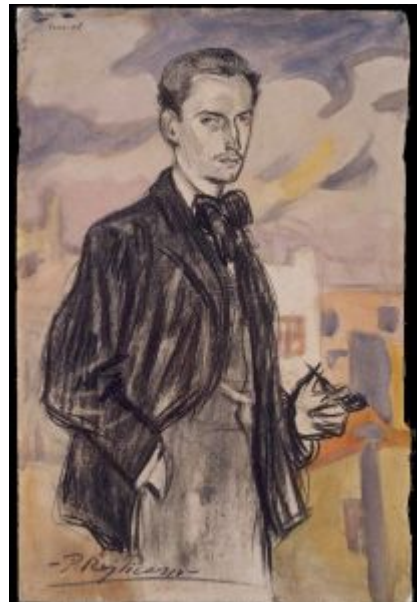


**Portrait de Josep Cardona.** Barcelona. [December/1899~]  
[January]/1900. Conté crayon & oil wash on paper. 51,8 x 36,5 cm.  
Private collection, Zollikon.

**OPP.00:061**; P.I:420; PP.9900:083; Z.VI:264; BA.00a\*:n/a;  
JR.91:146p; KB.01\*:4; MM.97\*:B26; RB.97:28p; TO.95a\*:46

**Portrait de Josep Rocarol.** Barcelona. [January]/1900.  
Charcoal & oil wash on cream paper. [48,5 x 33.2] 47 x 31  
cm. Fogg Art Museum, Harvard University, Cambridge, MA.  
(Inv 1940.107). Gift of Arthur Sachs.

**OPP.00:062**; P.I:424; PP.9900:087; Z.VI:270;  
BA.00a\*:n/a; BI.52\*:n/a; CM.52\*:n/a; EV.15:91p;  
GT.81\*:6; HO.55\*:1; JP.66:50; JR.91:147p; LO.36c\*:n/a;  
MM.97\*:B28; NY.39i\*:n/a; PT.49\*:n/a; SA.54\*:2;  
SR.43\*:n/a; WL.46\*:n/a





**Poster pour 'Dramas Criollos' (Pere Romeu Borrás) (À Pujulà i Vallès).** Barcelona. [January]/1900. Charcoal & pastel on paper. 57,8 x 38,1 cm. Nationalgalerie, Kupferstichkabinett, Staatliche Museen zu Berlin.

**OPP.00:063**; PP.00:035; BA.00a\*:n/a; JR.91:132p; MM.97\*:W31; TO.95a\*:120

**Portrait d'Ángel Fernández de Soto.** Barcelona. [December/1899~] January/1900. Blue & white chalk & conté crayon on beige paper. 30,5 x 22,9 [23] cm. Fondation Bemberg Museum, Toulouse. (Inv 2154). Formerly Sotheby's. #402, 6489, 11/04/93; Roberts Richmond Figgis Collection, Ballybrack, Ireland.

**OPP.00:135**; DB.I:22; PP.9900:035; Z.XXI:123; BA.00a\*:n/a; BP.62:143; DB.44\*:n/a; DB.69\*:n.a; LP.99:33p; TO.95a:185p; TO.96a:185p





**Jeune homme pensif au chapeau (Daniel Masgoumeri).** Barcelona. [December/1899~] January/1900. Charcoal & watercolor. 46 x 23 cm. Philippe Cazeau-Jacques de la Béraudière, Paris. Formerly Marina Picasso Collection. (Inv 00135).

**OPP.00:166**; P.I:394; PP.9900:052; Z.XXI:124; BA.00a\*:n/a; MP.81\*:14; TO.95a\*:49

---

**Portrait du tailleur Benet Soler, alias Retalls.** Barcelona. [December/1899~] January/1900. Charcoal & watercolor [tempera] on paper. 49 x 35 cm. Private collection.

**OPP.00:167**; P.I:405; PP.9900:070; Z.VI:267; BA.00a\*:n/a; JP.66:48; TO.95a\*:55





**Portrait d'homme au chapeau melon.** Barcelona.  
[December/1899~] January/1900. Charcoal & tempera [gouache] on paper. 49 x 31,5 cm. Catherine Hutin-Blay Collection, Paris. Formerly Jacqueline Roque Picasso Collection.

**OPP.00:169**; P.I:413; PP.9900:076; Z.XXI:96; BA.00a\*:n/a;  
TO.95a\*:56

**Portrait de Francisco Bernareggi.** Barcelona.  
[December/1899~] January/1900. Charcoal & watercolor. 48 x 32 cm. The Picasso Estate.

**OPP.00:170**; P.I:414; PP.9900:077; Z.VI:265; BA.00a\*:n/a;  
TO.95a\*:57





**Portrait de Manuel Ribas i Carreras.** Barcelona. [December/1899~] January/1900. Charcoal & watercolor. [48,5] 48 x 28,5 cm. Tokyo Station Gallery, Tokyo.

**OPP.00:171**; P.I:415; PP.9900:078; Z.VI:304; BA.00a\*:n/a; JG.84\*:78; TO.95a:29p; TO.96a:29p

---

**Portrait de Josep M. Folch i Torres.** Barcelona. [December/1899~] January/1900. Charcoal & watercolor. 62,5 x 32,6 cm. Catherine Hutin-Blay Collection, Paris. Formerly Jacqueline Roque Picasso Collection.

**OPP.00:172**; P.I:416; PP.9900:079; Z.VI:298; AC.09:36p; BA.00a\*:n/a; JP.66:44; LM.17\*:n/a; PJ.02\*:99; TO.95a\*:58





**Portrait de Joan Vallhonrat.** Barcelona. [December/1899~] January/1900. Charcoal & wash. 48 x 35 cm. Samir Traboulsi Collection.

**OPP.00:173**; P.I:409; PP.9900:073; Z.XXI:120; BA.00a\*:n/a; BA.17:183p; JP.66:45; TO.95a\*:60



**Portrait d'homme aux bras croisés.** Barcelona. [December/1899~] January/1900. Conté pencil, colored with turpentine. 47,2 x 19,5 cm. Catherine Hutin-Blay Collection, Paris. Formerly Jacqueline Roque Picasso Collection.

**OPP.00:174**; P.I:419; PP.9900:082; Z.VI:297; BA.00a\*:n/a; PJ.02\*:98; TO.95a\*:63



**Personnage debout de profil (Rafael Nogueras Oller)**. Barcelona. [December/1899~] January/1900. Color pencil & charcoal [OiC]. 20 x 7 cm. Sotheby's. #L118, 04/04/90.

**OPP.00:175**; P.I:426; PP.9900:089; Z.XXI:72; BA.00a\*:n/a

---

**Portrait d'Ángel Fernández de Soto**. Barcelona. [December/1899~] January/1900. Charcoal & colored background [OiC]. 43 x 24 cm. Private collection.

**OPP.00:176**; P.I:417; PP.9900:080; Z.XXI:98; BA.00a\*:n/a; JP.66:53; JR.91:147p





**Portrait de Mateu Fernández de Soto.** Barcelona. [December/1899~] January/1900. Charcoal & colored background. 51,4 x 23,5 cm. Ian Woodner Family Collection, New York.

**OPP.00:184**; P.I:423; PP.9900:086; Z.XXI:100; BA.00a\*:n/a; JP.66:51; JR.91:147p; TO.95a:21p; TO.96a:21p

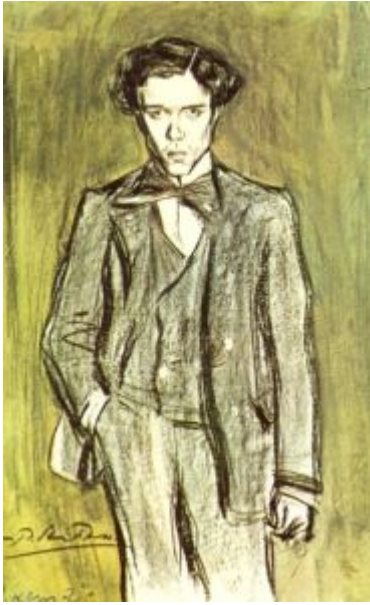
---

**Portrait d'Ángel Fernández de Soto.** Barcelona. [December/1899~] January/1900. Black pencil & watercolor. 47 x 31 cm. Private collection.

**OPP.00:342**; PP.9900:037; TO.95a\*:51







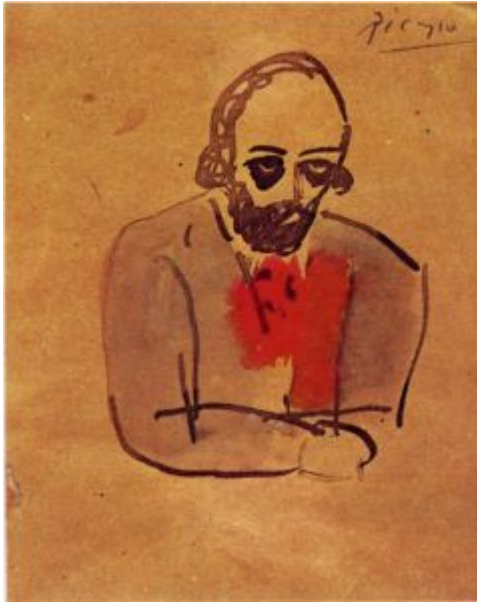
**Portrait de Xavier Zagotita i Bayona.** Barcelona. [December/1899~]  
[January]/1900. Conté pencil colored with turpentine. 47,7 x 31,4 cm.  
The Picasso Estate.

**OPP.00:035**; P.I:389; PP.9900:045; Z.VI:266; BA.00a\*:n/a;  
TO.95a:12p; TO.96a:12p



**Carles Casagemas avec cape et canne.** Barcelona.  
[Early]/1900. Ink & watercolor on paper. 21 x 15 cm. Artur  
Ramon Art, Barcelona.

**OPP.00:005**; P.I:470; PP.00:029; Z.VI:132; BA.00a\*:n/a;  
EV.14\*:47p; JR.91:159p



**Portrait de Manolo Hugué.** Barcelona. [Early]/1900. India ink & watercolor. 20 x 15 cm. Private collection, Barcelona.

**OPP.00:006**; P.I:466; PP.00:023; Z.VI:112; BA.00a\*:n/a; JP.66:39; WR.80:19p

---

**Portrait d'Hermen Anglada Camarasa.** Barcelona. [Early]/1900. Ink & watercolor. S/U. Private collection, Barcelona.

**OPP.00:022**; P.I:468; PP.00:026; Z.VI:119; BA.00a\*:n/a; JP.66:41





**Carles Casagemas de face et de profil.**

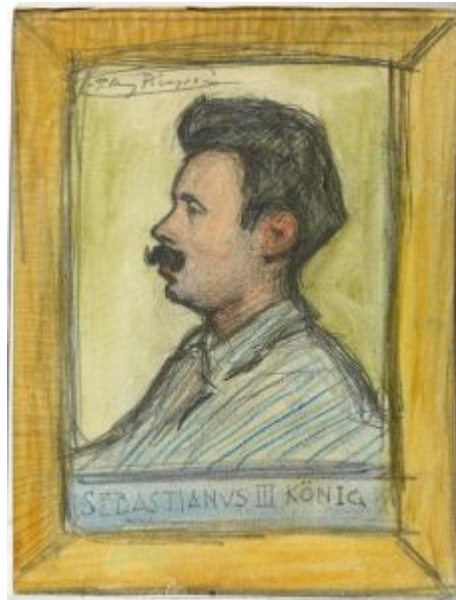
Barcelona. [1899~] [Early]/1900. Charcoal on paper. 13 x 21 cm. Private collection.

**OPP.00:029**; DB.A:8; P.I:448; PP.9900:235; Z.XXI:166; BA.00a\*:n/a; EV.10:266p; JP.66:59; TO.95a\*:31

---

**Sebastianus III König (Portrait de Sebastià Junyer-Vidal).** Barcelona. [Early]/1900. Lead pencil, color pencil & watercolor on varnished paper. 21 x 16 cm. Museu Picasso, Barcelona.

**OPP.00:030**; MPB:70.809; P.I:442; PP.9900:091; Z.XXI:114; BA.00a\*:n/a; CS.00\*:n/a; JP.66:82; JR.91:281p; TO.95a\*:99; TO.97\*:130





**Le poète Rafael Nogueras Oller dans l'intérieur de Els Quatre Gats.** Barcelona. [1899~] [Early]/1900. Oil on canvas. 41 x 28 cm. Simon M. Jaglom Collection, NY. Formerly Mrs. Helena Rubinstein (Princess Gourielli) Collection, NY.

**OPP.00:033**; DB.I:9; P.I:375; PP.9900:392; Z.I:21; AC.46:14; BO.57a\*:112; GP.96:62p; JP.66:23; JR.91:140p; MA.22b:30p; MM.78:31p; NM.95:34p; TH.75:2; TO.95a:273p; TO.96a:273p; UP.00:37; WW.91:56p

---

**Portrait de Pere Romeu Borrás.** Barcelona. Early/1900. Charcoal [Reverse of *Portrait du tailleur Benet Soler*]. 10,5 x 8,3 cm. The Metropolitan Museum of Art, NYC. (Inv 1982.179.22b). Gift of Raymonde Paul, in memory of her brother, C. Michael Paul, 1982.

**OPP.00:049**; AM.07\*:3.20; CL.06\*:n/a; GT.10\*:5b; JG.84\*:92; TO.95a\*:82





**La fin de la route (L'ange de la mort).** Barcelona. [1898~1899] [Early]/1900. Oil washes & conté crayon on laid paper. 47,1 x 30,8 cm. The Solomon R. Guggenheim Museum, NYC. (Inv 78.2514.T33). Thannhauser Collection. Bequest of Hilde Thannhauser.

**OPP.00:051**; DB.I:2; P.I:370; PP.9900:278; Z.XXI:79; AB.57\*:14p; AC.81:65p; BF.21\*:185p; BF.21:55p; BP.62:64; CR.84:113p; EV.10\*:253p; GT.81\*:3; JR.91:151p; MM.78:38p; MM.97\*:W23; NY.60d\*:222; NY.60d\*:222; NY.65b\*:27; PH.58\*:1; PL.89:19; TC.92:70p; TO.94:187p; UP.00:32; UW.84:29a

---

**Auparavant.** Barcelona. [1897] [Early]/1900. Pencil & watercolor on paper. 26,7 x 15,7 cm. Private collection. Courtesy Yoshii Gallery, NY. Formerly Gaspar Collection, Barcelona.

**OPP.00:064**; PP.00:036; Z.VI:103; JP.96\*:21; MM.97\*:35; TO.95a\*:66





**Maintenant.** Barcelona. [1897] [Early]/1900. Pencil & watercolor on paper. 27 x 17,5 cm. Private collection. Courtesy Yoshii Gallery, NY. Formerly Gaspar Collection, Barcelona.

**OPP.00:065**; PP.00:037; Z.VI:104; JP.96\*:22; MM.97\*:36; TO.95a\*:67

---

**Nogueras Oller et personnages dans Els Quatre Gats.** Barcelona. [Early]/1900. Lead pencil on paper. S/U. Martínez Sardá Collection, Barcelona.

**OPP.00:072**; P.I:376





**Portrait de Joaquim Mir.** Barcelona. [1899~] [Early]/1900. Conté pencil & watercolor on paper [Obverse of *Études*]. 20,8 x 15,5 cm. Museu Picasso, Barcelona. Donation 1970.

**OPP.00:075**; C:247; MPB:110.403; PP.9900:184; EV.15:85p; TK.02\*:n/a; TO.95a\*:98; TO.97\*:132a; VC.10\*:n/a

---

**Pere Romeu Borrás.** Barcelona. [Early]/1900. Sepia ink with reed pen, wash & watercolor on paper. 17,9 x 12,9 cm. Museu Picasso, Barcelona. Ceded by Barcelona City Council, 1963.

**OPP.00:076**; MPB:50.488; PP.00:032; AC.09:97p; BA.18\*:69p; LE.88a\*:n/a; OS.09b\*:n/a; TK.02\*:n/a; TO.95a\*:70; TO.97\*:135





**Personnages sur une place bordée d'arbres.** Barcelona. [1899~] [Early]/1900. Charcoal & conté pencil on ivory paper. 16,2 x 23 cm. Museu Picasso, Barcelona. Donation 1970.

**OPP.00:093**; C:883; MPB:110.628; PP.9900:312; CR.07:166p; TK.02\*:n/a; TO.94\*:150; TO.97\*:168

---

**Portrait du tailleur Soler.** Barcelona. [Early]/1900. Watercolor, pen & ink on paper. [22,2] 22 x 10,8 cm. Sotheby's. #41, L05002, 02/08/05. Formerly Private collection, London.

**OPP.00:114**; DB.I:27; PP.00:018; Z.XXI:137; LO.85\*:195; TO.95a\*:65







**Paysanne et son enfant.** Barcelona. [1898] [1899] [Early]/1900. [Pastel] Colored chalk & charcoal on paper. 31,5 x 48 cm. Marina Picasso Collection. (Inv 00049). Courtesy Galerie Jan Krugier, Geneva.

**OPP.00:123**; PP.98:223; Z.XXI:69; MP.81\*:7; PD.02\*:8; TO.94:155p; WS.95a\*:8

**Portrait de Carles Casagemas.** Barcelona. [1899~] [Early]/1900. Pen, ink & essence on paper. 10,5 x 7,9 cm. The Metropolitan Museum of Art, NYC. (Inv 1982.179.19). Raymonde Paul Donation in memory of his brother, C. Michael Paul, 1982.

**OPP.00:128**; P.I:438; PP.00:016; Z.XXI:116; AM.07\*:3.18; BA.00a\*:n/a; CL.06\*:n/a; EC.16\*:35; EV.14\*:113p; GT.10\*:2; JG.84\*:85; JP.66:30; NM.95:46p; RM.94:8p; TO.95a\*:73; WR.80:19p; WR.96:236p





**Portrait de Carles Casagemas.** Barcelona. [Early]/1900. Ink & watercolor on paper. 19,6 x 14,9 cm. Sotheby's. #147, N08676, 11/03/10. Formerly Jacques Seligmann Collection, NY.

**OPP.00:140**; DB.DI:8; PP.00:030; Z.VI:240; BA.00a\*:n/a; BW.13:61p; EV.14\*:54p; JR.91:118p; NM.95:32p

---

**Ángel Fernández de Soto.** Barcelona. [Early]/1900. Ink & watercolor on paper [Oic]. 19 x 14,5 cm. Marshall Field Collection.

**OPP.00:141**; DB.DI:9; PP.00:027; Z.VI:278





**Mère et enfant.** Barcelona. [1898] [1899~] [Early]/1900. Charcoal, colored with turpentine [OïC]. 48 x 25,5 cm. Josef Stransky Collection, NY.

**OPP.00:159**; P.I:368; PP.9900:279; Z.I:12; AC.46:12; BS.55:7; HT.34\*:1; NY.30d\*:79

---

**Projet pour une affiche de Carnaval.** Barcelona. [1899~] [Early]/1900. Conté pencil. [49 x 31,5] 48,2 x 32 cm. Musée Picasso, Paris.

**OPP.00:161**; MPP:427.v; P.I:372; PP.99:399; Z.XXI:128; BL.91:99p; DO.07\*:n/a; MN.80\*:n/a; TO.95a\*:102b





**Portrait de Carles Casagemas de perfil.** Barcelona. [1897] [1899] [Early]/1900. Conté pencil on paper [Reproduced in Catalunya Artística 38, 02/28/01]. S/U. Private collection.

**OPP.00:164**; P.I:515; PP.00:038; Z.VI:241; AB.97b\*:22; GP.96:70p; JR.91:181p; MM.97:33p; TO.95a:109p; TO.96a:109p



**Portrait du tailleur Benet Soler.** Barcelona. Early/1900. Pen, ink & watercolor on paper [Obverse of *Portrait de Pere Romeu Borrás*]. [10,7 x 9,6] 10,8 x 8,3 cm. The Metropolitan Museum of Art, NYC. (Inv 1982.179.22). Raymond Paul donation in memory of his brother, C. Michael Paul.

**OPP.00:177**; P.I:429; PP.00:017; Z.XXI:113; AM.07\*:3.20; BA.00a\*:n/a; CL.06\*:n/a; GT.10\*:5; JG.84\*:92; JP.66:36; TO.95a\*:82



**Portrait de Ramon Pichot (Pitxot).** Barcelona. Early/1900. Pen, ink & essence on wove paper. 9,8 x 8,9 cm. The Metropolitan Museum of Art, NYC. (Inv 1982.179.24). Raymond Paul donation in memory of his brother, C. Michael Paul.

**OPP.00:178**; P.I:432; PP.00:006; Z.XXI:108;  
AM.07\*:3.12; BA.00a\*:n/a; CL.06\*:n/a; EC.16\*:30;  
EV.15:103p; GT.10\*:7; JG.84\*:89; JP.66:35;  
JR.91:141p; TO.95a\*:77; WR.80:19p

**Portrait de Ramón Casas.** Barcelona. Early/1900. Pen, ink, & watercolor on paper. 10,8 x 10,2 cm. The Metropolitan Museum of Art, NYC. (Inv 1982.179.25). Raymond Paul donation in memory of his brother, C. Michael Paul.

**OPP.00:179**; P.I:433; PP.00:007; Z.XXI:107;  
AM.07\*:3.14; BA.00a\*:n/a; CL.06\*:n/a;  
EV.08:29; EV.15:107p; GT.10\*:8; JG.84\*:88;  
JP.66:37; PA.19h\*:30; TO.95a\*:78;  
WR.80:19p





**Portrait de Frederic Pujolà i Vallès.** Barcelona. [early]/1900. Pen, ink & watercolor on paper. [12,4] 12,7 x 9,2 cm. The Metropolitan Museum of Art, NYC. (Inv 1982.179.20). Raymond Paul Donation in memory of his brother, C. Michael Paul, 1982.

**OPP.00:180**; P.I:436; PP.00:012; Z.XXI:110; AM.07\*:3.19; BA.00a\*:n/a; CL.06\*:n/a; EC.16:28; GT.10\*:3; JG.84\*:91; JP.66:29; JR.91:154p; PA.19h\*:28; TO.95a\*:75; WR.80:19p

---

**Portrait de Juli Vallmitjana.** Barcelona. Early/1900. Pen, ink, watercolor, & chalk on paper. 12,4 x 8,9 cm. The Metropolitan Museum of Art, NYC. (Inv 1982.179.26). Raymond Paul donation in memory of his brother, C. Michael Paul.

**OPP.00:181**; P.I:434; PP.00:008; Z.XXI:112; AM.07\*:3.21; BA.00a\*:n/a; CL.06\*:n/a; EV.08:75; EV.15:101p; GT.10\*:9; JG.84\*:90; JP.66:34; PA.19h\*:27; TO.95a\*:72





**Portrait de Santiago Rusiñol.** Barcelona. Early/1900. Pen, ink & essence on wove paper. 10,8 x 10,2 cm. The Metropolitan Museum of Art, NYC. (Inv 1982.179.23). Raymond Paul donation in memory of his brother, C. Michael Paul.

**OPP.00:182**; P.I:435; PP.00:009; Z.XXI:111; AM.07\*:3.16; BA.00a\*:n/a; CL.06\*:n/a; EC.16\*:24; EV.08:54; EV.10:64p; GT.10\*:6; JG.84\*:87; JP.66:31; PA.19h\*:29; TO.95a\*:85; WR.80:19p

---

**Portrait de Joaquim Mir.** Barcelona. Early/1900. Pen, ink, & essence on paper. 8,9 x 7,9 cm. The Metropolitan Museum of Art, NYC. (Inv 1982.179.27). Raymond Paul donation in memory of his brother, C. Michael Paul.

**OPP.00:183**; P.I:437; PP.00:014; Z.VI:121; AM.07\*:3.15; BA.00a\*:n/a; CL.06\*:n/a; EC.16\*:25; GT.10\*:10; JG.84\*:95; JP.66:28; TO.95a\*:79





**Portrait de Anton Busquets i Punset (Lauréat aux Jeux Floraux)**. Barcelona. [Early]/1900. Lead pencil & charcoal on paper. 17,5 x 12,5 cm. Private collection, Barcelona.

**OPP.00:190**; P.I:461; PP.00:039; Z.XXI:165; AC.09:137p; EV.08:40; JP.66:55; TO.95a\*:116

**Joaquim Mir, peintre catalan**. Barcelona. [1897] [Early]/1900. Watercolor, brush & ink on paper laid down on paper. 21,6 x 15,8 cm. Sotheby's. #190, N08899, 11/07/12.

**OPP.00:191**; P.I:469; PP.00:015; Z.VI:108; BA.00a\*:n/a







**L'Étreinte.** Barcelona [Paris]. [1899~] [Early]/1900. Pen & ink on paper. 20,6 x 12,7 cm. Museu Picasso, Barcelona. Donation 1970.

**OPP.00:192**; C:239; MPB:110.295; P.I:472; PP.99:230



**Eduardo Marquina.** Barcelona. [Early]/1900. Ink (Reproduced in *Pèl & Ploma*, 09/15/00). S/U. Private collection.

**OPP.00:201**; AC.09:141p



**Portrait de Santiago Rusiñol.** Barcelona. [1899~] [Early]/1900 [1901]. Charcoal & watercolor on paper. 33 x 23 cm. El Conventet Collection, Barcelona.

**OPP.00:203**; PP.9900:065; BA.00a\*:n/a; BA.73a\*:20; BA.79a\*:37; BA.90c\*:169; CK.10\*:61; DG.88\*:57p; EC.16\*:17; EV.08:51; EV.10\*:23p; EV.15:99p; FC.00\*:10; JP.96\*:19; KO.89\*:8; LO.85\*:33; PA.85\*:121; PB.81\*:5A.14; PJ.02:97p; TO.95a\*:64

**Les toits de Barcelone: Église de Santa Marta.** Barcelona. [1897] [Early]/1900. Oil on canvas. 21,1 x 22,5 cm. Museu Picasso, Barcelona. Donation 1970.

**OPP.00:204**; C:290; MPB:110.102; PP.97:003; CR.07:97p; CR.14:15; EV.15:129p; PJ.02\*:102; TK.02\*:n/a; TO.94\*:146





**Portrait de Frederic Pujulà i Vallès (Étude).**

Barcelona. [Early]/1900. Ink & wash on paper.  
[12,8 x 14] 13 x 14 cm. Private collection,  
Barcelona.

**OPP.00:238**; PP.00:013; Z.VI:246; BA.00a\*:n/a;  
EC.16\*:27; TO.95a\*:74

---

**Portrait de Santiago Rusiñol.** Barcelona.  
[Early]/1900. Pen, ink, & watercolor on paper.  
10,3 x 9,2 cm. Museu Picasso, Barcelona.  
Donation 1970.

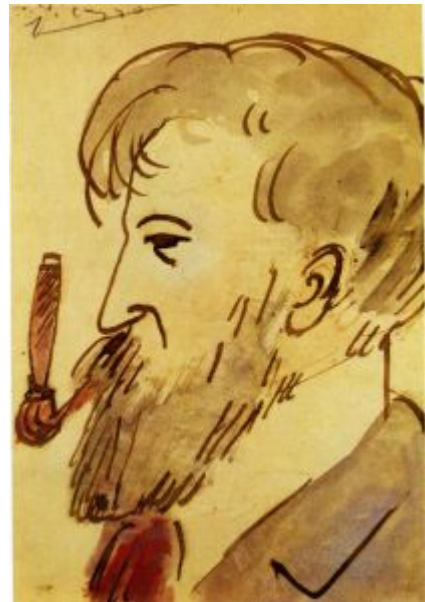
**OPP.00:240**; C:164; MPB:110.433; PP.00:010;  
BA.00a\*:n/a; BA.90c\*:n/a; EC.16\*:33;  
EV.08:53; EV.10\*:64p; GT.10:6.1; TO.95a\*:84





**Portrait de Alexandre Riera.** Barcelona. [1897] [Early]/1900. Indian ink [& watercolor] on paper. 20 x 14,5 cm. Museo Nacional Centro de Arte Reina Sofia, Madrid. (Inv DE 00463). Formerly Sotheby's. #148, 11/30/94.

**OPP.00:241**; PP.00:024; Z.VI:113; BA.00a\*:n/a; EV.14\*:202p; JR.91:160p; TO.95a\*:96



**Portrait de Santiago Rusiñol.** Barcelona. [Early]/1900 [1902~1903]. Watercolor (applied with pen and paintbrush) on paper. 21,6 x 15,6 cm. Private collection, Sitges.

**OPP.00:242**; PP.00:011; Z.XXI:122; BA.00a\*:n/a; EV.08:68; EV.10\*:304p; TO.95a\*:97



**L'étreinte.** Barcelona [Paris]. [July/1899] [Early]/1900. Pen on paper. 20,6 x 12,6 cm. Museu Picasso, Barcelona. Donation 1970.

**OPP.00:270**; C:902; MPB:110.296r; PP.99:229; HN.00\*:48; RI.13\*:307p; VC.96b\*:n/a

---

**Esquisse.** Barcelona. [Early]/1900. Pen & ink on paper. 20,7 x 13,3 cm. Museu Picasso, Barcelona. Donation 1970.

**OPP.00:271**; MPB:110.412r





**Croquis de figures.** Barcelona. [Early]/1900. Conté pencil on paper. 21,9 x 25,5 cm. Museu Picasso, Barcelona. Donation 1970.

**OPP.00:273**; MPB:110.826

---

**Idylle du ciel.** Barcelona. [Early]/1900. Oil on canvas. 36 x 24,5 cm. Fundació Palau, Caldes d'Estrac. (Inv 0000190).

**OPP.00:280**





**Profil de Rocarol.** Barcelona. [Early]/1900. Pencil on paper. 14 x 20 cm. Fundació Palau, Caldes d'Estrac. (Inv 0000191).

**OPP.00:281**; AC.09:117p; EV.14\*:168p

---

**Esquisses.** Barcelona. [Summer/1899] [Early]/1900. Sepia ink & pen on paper. 10,1 x 16,2 cm. Museu Picasso, Barcelona. Donation 1970.

**OPP.00:297**; MPB:110.268; PP.99:226





**Deux femmes.** Barcelona. [1899~1900] [Early]/1900. Pen & ink on paper. 24 x 15,4 cm. Museu Picasso, Barcelona. Donation 1970.

**OPP.00:306**; C:893; MPB:110.640r; PP.9900:245

---

**Figure féminine.** Barcelona. [1899~1900] [Early]/1900. Conté pencil on paper. 33,6 x 21,3 cm. Museu Picasso, Barcelona. Donation 1970.

**OPP.00:313**; C:890; MPB:110.582; PP.9900:215







**Fragment de dessin.** Barcelona. [1899~1900]  
[Early]/1900. Lead pencil on paper. 24,2 x 30,5  
cm. Museu Picasso, Barcelona. Donation 1970.

**OPP.00:315**; MPB:110.666r; PP.9900:259

---

**Quatre femmes qui pleurent et autres  
croquis.** Barcelona. [Early]/1900.  
Charcoal, red pencil & chalk touches on  
paper [Reverse of *Torse*]. 47,5 x 61,2 cm.  
Museu Picasso, Barcelona. Donation 1970.

**OPP.00:317**; MPB:110.592r;  
PP.9900:221; CR.07:173p; TO.97\*:166a





**Un peintre moderniste entouré de curieux.** Barcelona. [Early]/1900. Charcoal & pastel on paper. 15,2 x 21,7 cm. Christie's. ##22, 4014, 03/26/15. Formerly Private collection, Barcelona.

**OPP.00:332**; PP.99:191; Z.XXI:136; FC.00\*:3

---

**Manola à l'éventail.** Barcelona. [Early]/1900. Charcoal on ledger paper. 31,5 x 22 cm. Musée Picasso, Paris. Jacqueline Roque Picasso Collection. Dation 1990.

**OPP.00:350**; MPP:1990.93.09r; PP.00:054; GR.90\*:90; JR.91:142p; PA.07a\*:82p





**Scène goyesque: toreros, Manola et deux chiens.** Barcelona. [Early]/1900. Charcoal on ledger paper. 31,5 x 22 cm. Musée Picasso, Paris. Jacqueline Roque Picasso Collection. Dation 1990.

**OPP.00:351**; MPP:1990.93.27r; PP.00:165; BL.91:19p; GR.90\*:90; JR.91:156p; PA.07a\*:81p; PA.19h\*:21

**Riera de Sant Joan vu d'une fenêtre.** Barcelona. [Early]1900. Oil on wood. 22,3 x 13,8 cm. Museu Picasso, Barcelona. Donation 1970.

**OPP.00:045**; C:151; MPB:110.213; P.I:363; PP.00:200; BL.91:100p; CR.07:117p; CR.98:41p; EV.14\*:63p; EV.15:143p; RS.88:8p; TH.75:3; TO.94\*:147; TO.97:116p



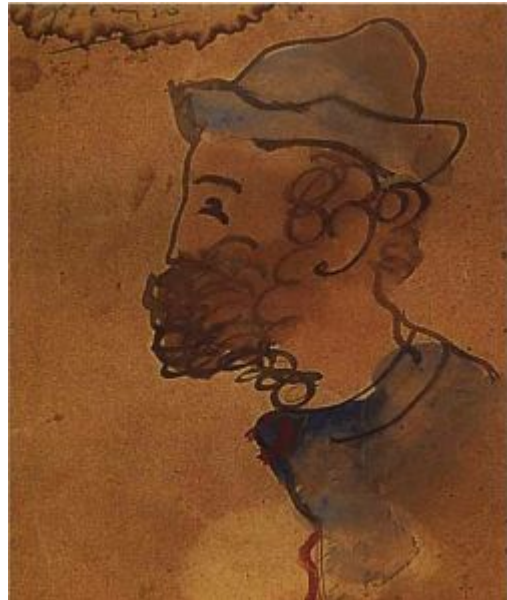


**Esquisse: tête et main.** Paris. [Early]/1900. Charcoal & blue crayon on paper. [31,5 x 22] 30,5 x 21 cm. Musée Picasso, Paris. Jacqueline Roque Picasso Collection. Dation 1990.

**OPP.00:376;** MPP:1990.93.15r; PP.00:065; BL.91\*:117; GR.90\*:90

**Portrait de Ramon Pichot (Pitxot).** Barcelona. [1897] [Early~Spring]/1900. India ink & watercolor on paper. 21 x 15,5 cm. Joan Gaspar i Paronella Collection, Barcelona.

**OPP.00:121;** P.I:467; PP.00:025; Z.VI:116; AC.09:103p; BA.00a\*:n/a; JP.66:43; TO.95a\*:76





**Café-concert du Paralelo.** Barcelona.  
[Early/1900~Spring/1901]. Oil on wood. 36 x 48  
cm. Musée Picasso, Paris. Aisie en douane, 2007.  
Formerly Sotheby's. #20, 11/12/90. J. Barbey  
Collection, Barcelona.

**OPP.00:377**; DB.I:8; MPP:2008.2; P.I:558;  
PP.99:108; Z.I:11; AB.12\*:88p; AC.46:11;  
BD.16:47p; BJ.19\*:n/a; EV.15:181p; PA.19h\*:39;  
PA.20j\*:18; SY.11\*:n/a

**Lettre de Casagemas avec une revue  
de l'exposition dans Els Quatre Gats.**  
Barcelona. February/1900. Conté pencil &  
ink on paper. 20,8 x 26,3 cm. Museu  
Picasso, Barcelona. Donation 1970.

**OPP.00:285**; MPB:110.286r; TO.95a\*:208





**Études de personnages et lettre de Casagemas avec une revue de l'exposition dans Els Quatre Gats.**

Barcelona. February/1900. Conté pencil & ink on paper. 20,8 x 26,3 cm. Museu Picasso, Barcelona. Donation 1970.

**OPP.00:289**; MPB:110.286; PP.00:088; TO.95a\*:208

**Menu de Els Quatre Gats.** Barcelona. [Early-Spring]/1900. Printed menu of Els Quatre Gats. 21,8 x 32,8 cm. Museu Picasso, Barcelona. Donation 1970.

**OPP.00:023**; C:147; MPB:110.995; P.I:377; PP.9900:377; Z.VI:193; AM.07\*:n/a; BA.05c\*:n/a; BA.09a\*:n/a; BA.12c\*:n/a; BA.87a\*:n/a; BA.90c\*:n/a; CK.10:52; CR.07:141p; CS.00\*:201p; EC.02:31; EH.96:25p; GC.96:16p; GM.11:8p; GP.96:61p; JC.06:14; JD.87:27p; JF.94a:5; JG.84\*:73; JP.66:20; JR.91:140p; KO.87\*:n/a; LO.85\*:n/a; MA.08c\*:n/a; MC.05:25p; MC.11:31p; MM.00:12p; MM.97\*:34; MS.03\*:n/a; NH.94:10p; NM.95:34p; NS.01:137; PB.81\*:6A.3; PM.97:23p; QU.96\*:n/a; RB.97:25p; ST.89\*:n/a; TO.95a:23p; TO.96a:23p; TS.92:169p; UP.00:36; WR.80:25p; WW.91:56p





**Menu pour Els Quatre Gats.** Barcelona. [Early-Spring]/1900. Chromolithograph. 21,8 x 32,8 cm. Museu Picasso, Barcelona. Donation 1970.

**OPP.00:108**; MPB:112.171; AC.81:65p; EV.15:95p

**A l'entrée du spectacle de marionnettes dans Els Quatre Gats.** Barcelona. [Early-Spring]/1900. Lead pencil on paper. S/U. Private collection.

**OPP.00:165**; P.I:380; P.II:4; PP.99:393; Z.XXI:126; CR.07:143p; JP.66:21; MM.78:33p; TO.95a:24p; TO.96a:24p





**Menu pour Els Quatre Gats: Plat del Dia.** Barcelona. [Early-Spring]/1900. Wax & ink on paper. 45,5 x 29 cm. The Hunt Museum, Limerick, Ireland. (Inv MG.145).

**OPP.00:243**; BA.18\*:62p; BP.62:7; EV.10\*:65p; EV.15:97p; MM.78:33p

**Portrait-charge de Pere Romeu en Bòer.** Barcelona. [Early-Spring]/1900. Watercolor, pen, brush & ink & graphite pencil on Menu for Els Quatre Gats. 21,8 x 32,8 cm. Museu Picasso, Barcelona. Formerly Sotheby's. #354, N08241, 11/08/06; #2, L02005, 06/24/02.

**OPP.00:396**; MPB:110.813; PP.9900:376; BA.03a\*:29; BA.18\*:92p; BL.91\*:23; CL.06\*:n/a; EV.10\*:66p; JL.71:200p; LU.86\*:n/a; MM.78:32p; MM.97\*:34; PA.01b\*:n/a; PD.09:15p; PJ.02\*:97; PM.91:25p; PP.20\*:33; TK.02\*:n/a; TO.95a\*:18; TO.97\*:144; VC.96a\*:n/a; WR.80\*:19p







**Affiche Caja de Previsión y Socorro (Étude).**  
Barcelona. [Early-Spring]/1900. Sepia wash on  
paper. 23,8 x 31 cm. Museu Picasso, Barcelona.  
Donation 1970.

**OPP.00:081**; C:204; MPB:110.811; PP.00:091;  
BA.12b\*:n/a; BA.12c\*:n/a; PL.89:7; TK.02\*:n/a;  
TO.95a\*:106; TO.97\*:148a

**Affiche Caja de Previsión y Socorro  
(Étude).** Barcelona. [Early-Spring]/1900.  
Pen & ink on paper. 23,8 x 31 cm. Museu  
Picasso, Barcelona.

**OPP.00:082**; MPB:110.811r; PP.00:092;  
BA.12b\*:n/a; TO.97\*:148b





**Affiche pour Caja de Previsión y Socorro (Étude).** Barcelona. [Early-Spring]/1900. Black pencil on white laid paper [Obverse of *Affiche pour Caja de Previsión y Socorro (Étude)*]. 48 x 31,3 cm. Museu Picasso, Barcelona.

**OPP.00:083**; C:652; MPB:110.800; PP.00:089; BA.12b\*:39p; JG.84\*:48; TK.02\*:n/a; TO.97\*:149a; WS.95a\*:7

**Affiche pour Caja de Previsión y Socorro (Étude).**

Barcelona. [Early-Spring]/1900. Conté pencil on white laid paper [Reverse of *Affiche pour Caja de Previsión y Socorro (Étude)*]. 48 x 31,3 cm. Museu Picasso, Barcelona. Donation 1970.

**OPP.00:084**; MPB:110.800r; PP.00:090; BA.12b\*:39p; JR.91:155p; TO.97\*:149b





**Affiche pour Caja de Previsión y Socorro (Étude).** Barcelona. [Early-Spring]/1900. Conté pencil on white laid paper & pen annotations. 32,2 x 22,5 cm. Museu Picasso, Barcelona. Donation 1970.

**OPP.00:085**; C:175; MPB:110.825; PP.00:094; BA.12b\*:38p; MM.97:96p; MS.03\*:n/a; PB.81\*:7A.19; TK.02\*:n/a; TO.95a\*:105; TO.97\*:150a

**Affiche pour Caja de Previsión y Socorro (Étude).** Barcelona. [Early-Spring]/1900. Conté crayon, sepia ink & pen on white laid paper. [22,5] 22,2 x 32,2 cm. Museu Picasso, Barcelona. Donation 1970.

**OPP.00:086**; MPB:110.825r; PP.00:191; TO.97\*:150b





**Étude d'affiche pour El Liberal (Étude).**

Barcelona. [Early-Spring]/1900. Conté pencil on paper. 33,7 x 36,3 cm. Museu Picasso, Barcelona. Donation 1970.

**OPP.00:087**; C:915; MPB:110.696; PP.00:177;  
BA.12c\*:n/a; JG.84\*:50; JR.91:282p;  
MA.97c\*:n/a; MS.03\*:n/a; PL.89:36;  
TO.95a\*:109; TO.97\*:151a

**Affiche pour El Liberal (Étude).**

Barcelona. [Early-Spring]/1900. [Conté crayon] Charcoal on paper. 33,7 x 36,3 cm. Museu Picasso, Barcelona. Donation 1970.

**OPP.00:088**; C:873; MPB:110.696r;  
PP.00:178; TO.97\*:151b





**Dessin pour le journal Joventut.** Barcelona. [Early-Spring]/1900. Pen & sepia ink on paper. 22,5 x 32,2 cm. Museu Picasso, Barcelona. Donation 1970.

**OPP.00:089**; MPB:110.839; PP.00:196;  
CS.00\*:127p; PL.89:8; TO.95a\*:117; TO.97\*:152

**Le rameur (Joan Oliva i Bridgman, Ser o no ser).** Barcelona. [Early-Spring]/1900. Charcoal on brown laid paper (Published in Joventut, 08/16/00). 29,5 x 40 cm. Museu Picasso, Barcelona. Acquisition 10/07/91.

**OPP.00:090**; MPB:112.954; P.I:460;  
PP.00:188; Z.VI:317; AB.46:253p;  
BA.12c\*:n/a; CS.00\*:202p; JP.66:56;  
MM.97:89p; PA.19h\*:24; TK.02\*:n/a;  
TO.94\*:151; TO.95a\*:113; TO.97\*:154;  
WR.12b:65





**Étude pour Femme assise (Juan Oliva Bridgman, El clam de les verges)**. Barcelona. [Early-Spring]/1900. Conté pencil, pen & ink on paper. 32 x 22 cm. Museu Picasso, Barcelona. Donation 1970.

**OPP.00:186**; C:4; MPB:110.669; P.I:457; PP.00:150;  
AB.97a\*:n/a; CS.00\*:128p; PB.81\*:5A.11; TO.95a\*:110;  
TO.97:183p

**Étude pour 'Ser o no ser' (Joan Oliva i Bridgman)**. Barcelona. [Early-Spring]/1900. Conté crayon on paper. 22 x 31,6 [31,5] cm. Museu Picasso, Barcelona. Donation 1970.

**OPP.00:187**; C:920; MPB:110.769;  
P.I:459; PP.00:179; JG.84\*:99;  
TO.95a\*:112





**Croquis pour El Liberal.** Barcelona. [Early-Spring]/1900. Conté pencil & charcoal on paper. 35,3 x 60,7 cm. Museu Picasso, Barcelona. Donation 1970.

**OPP.00:264**; MPB:110.888r; PP.00:176;  
TO.95a\*:108

---

**Croquis pour le journal Joventut.** Barcelona. [Early-Spring]/1900. Pen & color pencil [ink] on paper. 25,8 x 6,2 cm. Museu Picasso, Barcelona. Donation 1970.

**OPP.00:265**; MPB:110.329; PP.00:139





**Croquis pour le journal Joventut.** Barcelona. [Early-Spring]/1900. Pen & color pencil on paper. 23 x 6,5 cm. Museu Picasso, Barcelona. Donation 1970.

**OPP.00:266**; MPB:111.652; PP.00:197

**Croquis pour 'Ser o no ser' (Joan Oliva i Bridgman).** Barcelona. [Early-Spring]/1900. Conté crayon on paper. 46,8 x 30,5 cm. Museu Picasso, Barcelona. Donation 1970.

**OPP.00:267**; C:834; MPB:110.801; PP.00:186







**Croquis per 'Ser o no ser' (Joan Oliva i Bridgman).** Barcelona. [Early-Spring]/1900. Conté pencil on paper. 22 x 31,5 cm. Museu Picasso, Barcelona. Donation 1970.

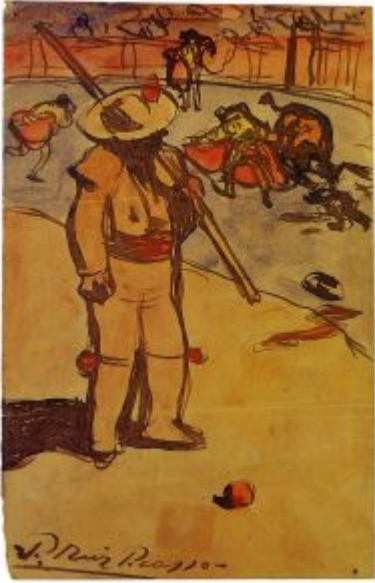
**OPP.00:298**; C:908; MPB:110.769r; PP.00:180

---

**Les arènes de Barcelone.** Barcelona. [Spring]/1900. Pastel on cardboard. 51 x 69 cm. Toyama Prefectural Museum of Art & Design. Formerly Private Collection, France; Emmanuel Virenque Collection.

**OPP.00:024**; DB.II:8; P.I:454; PP.00:106; Z.XXI:145; CR.07:147p; JR.91:152p; PA.44b\*:n/a; UP.00:34; WW.91:61p





**Le matador.** Barcelona. [Spring]/1900. Watercolor & ink on paper. 21 x 13,5 cm. Museu de l'Abadia i Santuari de Montserrat.

**OPP.00:025**; PP.99:213; TO.95a\*:101

---

**Petit torero de dos.** Barcelona. [1899~] [Spring]/1900. Wood engraving [Xylography on paper]. 20,7 x 13,7 cm. Museu Picasso, Barcelona. Also Musée Picasso, Paris. Dation 1979.

**OPP.00:027**; C:712; MPB:110.292; MPP:3174; P.I:451; Z.VI:282; PA.07a\*:195p; PP.20\*:303





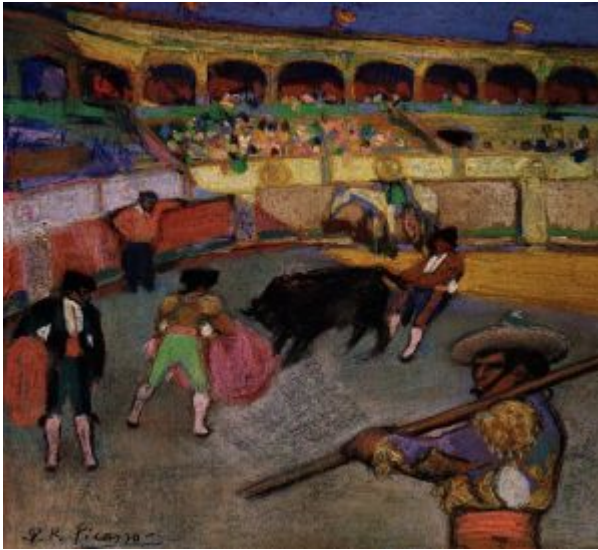
**Courses de taureaux (Corrida).** Barcelona. [Spring]/1900 [1901]. Pastel, charcoal & gouache on canvas [paper]. 16 x 30 cm. Museu del Cau Ferrat, Sitges. (Inv 30.669). Formerly Santiago Rusiñol Collection.

**OPP.00:028**; DB.II:7; P.I:453; PP.00:108; Z.XXI:147; BA.00b\*:n/a; EV.08:103; EV.10\*:63p; EV.15:141p; GA.14:13p; JF.94a:12; JF.96:42p; JG.84\*:100; JP.66:63; JR.91:152p; PM.97:40p; PT.05\*:35; TO.95a\*:100; UP.00:58

**Arrastre (croquis).** Barcelona. [Spring]/1900. Charcoal & pastel on paper [Reverse of *Le baiser*]. [15 x 22] 14,6 x 21,9 cm. Private collection, Barcelona. Formerly Christie's. #149, 06/27/89.

**OPP.00:032**; P.I:446; PP.00:095; JR.91:163p





**Taureau tiré par la queue.** Barcelona.  
[Spring]/1900. Pastel on cardboard. 35 x 39,5 cm.  
Sotheby's. #10, 06/28/67. Formerly Douglas  
Cooper Collection.

**OPP.00:050**; DB.A:2; P.I:455; PP.00:107;  
Z.XXI:146; UP.00:57

**Le picador (Corrida).** Barcelona.  
[Spring]/1900 [1901]. Pastel on paper. 19  
x 27 cm. The Solomon R. Guggenheim  
Museum, NYC. (Inv 91.3912). Bequest  
Hilde Thannhauser, 1991.

**OPP.00:052**; DB.II:1; P.I:449; PP.00:096;  
Z.VI:379; AB.39b\*:163; AC.46:83;  
JB.08:52-53; JC.01b\*:6; PT.05:45p;  
TC.92:75p





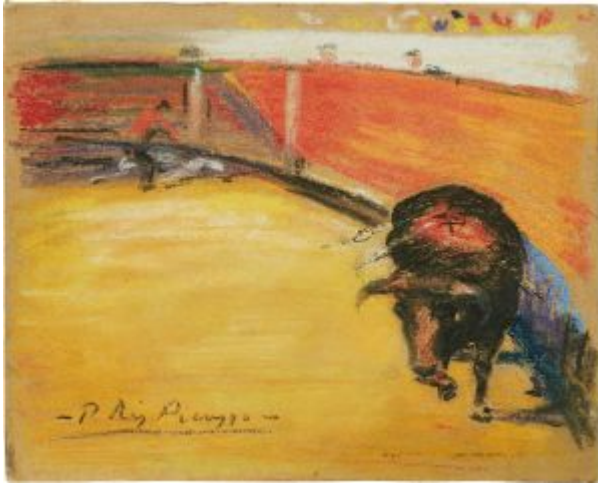
**Picador et 'Monosabio'**. Barcelona. [1899]  
[Spring]/1900. Black ink, brush & watercolor on paper  
[Obverse of *Femmes*]. [16,5 x 14,7] 17,5 x 14,8 cm.  
Museu Picasso, Barcelona. Donation 1970.

**OPP.00:053**; C:181; MPB:110.840; P.I:315; PP.99:215;  
CR.07:149p; GC.96:46p; KY.95\*:n/a; LE.88a\*:n/a;  
MG.10a\*:19; PA.93a\*:n/a; PB.81\*:3A.3; PJ.02\*:105;  
TK.02\*:n/a; TO.97\*:158a

**Déjeuner à l'extérieur**. Barcelona.  
[Spring]/1900. Wax, pastel, charcoal  
crayon & pencil on cardboard. 24,6 x 30,6  
cm. Museo de Bellas Artes, Bilbao. (Inv  
82.26). Donación de Juan Gorbea, 1962.

**OPP.00:055**; PP.00:115; BA.00a\*:n/a;  
BI.00\*:n/a; CR.07:57p; EV.15:135p;  
FC.00\*:2; MA.93a\*:50a; PJ.02\*:104;  
PN.99a\*:40-41p; SV.99\*:42-43p;  
TO.94\*:155





**Scène tauromachique.** [Barcelona].  
[Spring/1900]. Pastel on paper laid down on card.  
20,3 x 25,4 cm. Private collection, New York.  
Sotheby's. #189, N07892, 05/07/03; Private  
Collection. Courtesy Galerie Jan Krugier, Geneva.

**OPP.00:074**; PP.00:097; JC.01b\*:5; NY.21g\*:1;  
PT.05:76p

**Courses de taureaux (Corrida) (Études).** Barcelona.  
[1899~] [Spring]/1900. Pen on paper. 20,7 x 12,9 cm. Museu  
Picasso, Barcelona. Donation 1970.

**OPP.00:091**; C:705; MPB:110.298; PP.99:202; JC.01b\*:7;  
JG.84\*:69; LE.88a\*:n/a; PA.93a\*:n/a; PB.81\*:3A.2;  
PJ.02\*:106; PT.05\*:33; TK.02\*:n/a; TO.97\*:159





**Dans l'arène.** Barcelona. [Spring]/1900. Oil, gouache & pastel on card. [23 x 32] 23,8 x 29,8 cm. Christie's. #30, 6882, 02/02/04.

**OPP.00:104**; DB.II:5; P.I:445; PP.00:103; Z.XXI:144; DU.92\*:n/a; FR.65a\*:3

---

**Courses de taureaux.** Barcelona. [Spring]/1900. Pastel & gouache on paper. 19 x 25 cm. Mr. and Mrs. Leigh B. Block Collection, Chicago. Formerly Barbey Collection, Barcelona.

**OPP.00:111**; DB.II:4; P.I:450; PP.00:100; Z.VI:299; AC.46:86; PA.93:103p





**Courses de taureaux.** Barcelona. [Spring]/1900. Pastel on paper. 28 x 28 cm. Private collection, Paris. Courtesy Galerie Schmit. Formerly Alexandre Riera Collection;.

**OPP.00:112**; DB.II:3; P.I:444; PP.00:098; Z.VI:380; AC.46:85; MM.11a:21p; PA.93a\*:15

**Bohémienne devant La Musciera.**

Barcelona. [1898] [Spring]/1900. Pastel on paper. 44,5 x 59,7 [59] cm. Mie Prefectural Art Museum, Japan. Formerly Sotheby's. #19, 11/12/90.

**OPP.00:122**; DB.II:9; P.I:447; PP.00:111; Z.XXI:167; AB.57\*:14p; BF.21\*:162p; BF.21:75p; MR.53:19p; PA.01a\*:n/a; RD.00\*:9; TI.71:84p; TO.94:189p; WW.91:60p







**Matadors.** Barcelona. [1899] [Spring]/1900. Conté crayon & gouache on paper [OïC]. 23,1 x 21,2 cm. Private collection.

**OPP.00:139**; DB.I:29; PP.99:222; Z.VI:280

---

**Croquis.** Barcelona. [Spring]/1900. Pen & ink on paper. 21,9 x 25,5 cm. Museu Picasso, Barcelona. Donation 1970.

**OPP.00:258**; MPB:110.826r; MG.10a\*:21





**Croquis divers: picador et têtes d'homme.**

[Barcelona]. [1899] [Spring]/1900. Conté crayon, pen & ink on paper. [13,6] 13,7 x 21 cm. Museu Picasso, Barcelona. Donation 1970.

**OPP.00:260**; C:854; MPB:110.289r; PP.99:206; PB.81\*:3A.5r

---

**Torero avec sa capa pliée.** Barcelona. [1899] [Spring]/1900. Pen & ink on paper. 24,9 x 17,8 [34] cm. Museu Picasso, Barcelona. Donation 1970.

**OPP.00:261**; MPB:110.330r; PP.99:224





**Croquis divers.** Barcelona. [Spring]/1900. Pen & ink on paper. 13,3 x 20,8 [20,6] cm. Museu Picasso, Barcelona. Donation 1970.

**OPP.00:262**; MPB:110.837; PP.00:195;  
MG.10a\*:18

---

**Scène taurine: l'hommage.** Barcelona. [1899] [Spring]/1900. Pen & ink on paper. [34] 17,8 x 24,9 cm. Museu Picasso, Barcelona. Donation 1970.

**OPP.00:276**; MPB:110.330; PP.99:223;  
MG.10a\*:13





**Esquisses.** Barcelona. [Spring]/1900. Conté pencil on paper. 15,9 x 21,8 cm. Museu Picasso, Barcelona. Donation 1970.

**OPP.00:277**; MPB:110.312r

---

**Paysage Catalan.** Barcelona. [Spring~Summer]/1900. Oil on wood panel. 31,1 x 40,7 cm. Private collection.

**OPP.00:120**; PP.00:104





**L'entrée aux arènes de Barcelone.** Barcelona. [Spring~Summer]/1900 [1901]. Pastel on board. [28 x 28] 27 x 27,5 cm. Sotheby's. #74, L20010, 06/18/20. Formerly Private collection, Paris; Alexandre Riera Collection, Barcelona.

**OPP.00:145**; DB.II:2; P.I:443; PP.00:099; Z.VI:382; AC.46:84; EM.55:5p

---

**Autoportrait avec Carles Casagemas et Rosita.** Paris. [Mid-Spring]/1900. India ink & watercolor [Oic]. 14 x 10 cm. Private collection.

**OPP.00:136**; DB.DII:8; P.I:473; PP.00:206; Z.XXI:143; EM.55:10p; JR.91:151p; LA.59\*:n/a; PB.21:28





**Autoportrait et études.** Barcelona. May/1900. Pen, sepia ink & watercolor on watermarked paper. 22,3 x 32 cm. Museu Picasso, Barcelona. Donation 1970.

**OPP.00:189**; C:675; MPB:110.814; P.I:464; PP.00:093; EC.16\*:21; PB.21:32; PB.81\*:7A.2; TO.95a\*:107; TO.97:181p; YP.13\*:16

**Jeune fille devant une fenêtre ouverte.**

Barcelona. [Summer]/1900. Oil on canvas. 55,7 x 46,2 cm. Museu Picasso, Barcelona.

**OPP.00:036**; C:188; MPB:110.054; P.I:361; PP.00:119; CR.07:115p; EV.10:281p; GC.96:48p; PJ.02\*:101; ST.88\*:n/a; TK.02\*:n/a; TO.94\*:145; TO.95a\*:14





**Croquis divers: torero et picador.** Barcelona. [Summer]/1900. Graphite pencil on paper. 26,2 x 20,9 [20,8] cm. Museu Picasso, Barcelona. Donation 1970.

**OPP.00:259**; MPB:110.513r; PP.00:168; BF.21:36p; MG.10a\*:17; PA.01b\*:n/a; PA.21e\*:25; PM.96\*:n/a; TU.15:35p

**La Boija (La folle).** Barcelona. [Summer~Fall] Pre-6-September/1900. Ink, ink wash, gouache, pastel & grattage on laid paper (Reproduced in Catalunya Artística, 09/06/00). [13,5 x 9,5] 14,1 x 10,2 cm. Christie's. #10, 4053, 03/25/15. Formerly Collection Triton Foundation, The Netherlands; Sotheby's. #216, 06/26/91; Maître Maurice Rheims Collection, Paris.

**OPP.00:137**; DB.I:25; P.I:462; PP.00:202; Z.VI:271; BP.62:41; FR.65a\*:6; JR.91:155p; PA.66a\*:4; PL.89:18; RT.02\*:n/a; RT.12\*:557p; SO.06\*:38p; TH.07a\*:13; TH.11\*:10p; TO.95a\*:114





**Couple espagnol devant une auberge.**

[Málaga]. Summer/1900. Pastel on cardboard. 40 x 50 cm. Kawamura Memorial Museum of Art, Sakura.

**OPP.00:003**; PP.00:105; CR.07:55p; EV.15:137p; JM.07\*:7; MM.97\*:32; RB.97:34-35p; TO.94\*:154

---

**'La musclera'**. Barcelona.  
[Summer]/1900. Oil on canvas. 48,1 x 48,3 cm. Private collection, Paris.

**OPP.00:031**; DB.I:24; P.I:441; PP.00:112; Z.XXI:157; CR.07:49p; NM.06:44p; PA.01a\*:n/a; PJ.02\*:103; TO.94\*:152







**Masque de visage.** Barcelona. [Summer]/1900. Oil on canvas. 26,2 x 20 cm. Museu Picasso, Barcelona.

**OPP.00:046**; C:190; MPB:110.096; P.I:366; PP.00:122; GI.95\*:n/a

---

**Course de taureaux (Corrida).**

Barcelona. [Summer]/1900. Gouache & pastel on board. [45,8 x 68,6] 47,1 x 70 cm. Christie's. #6A, 17154, 05/13/19. Formerly Henry John Heinz II Collection, Pittsburg.

**OPP.00:048**; DB.II:6; P.I:452; PP.00:109; Z.XXI:148; BA.00b\*:n/a; EV.08:104; FW.67\*:142; JR.62\*:1.6; MM.97\*:33; NH.60\*:191; NY.21g\*:2; PT.05\*:34; TO.64\*:5; WR.80\*:31p





**Le peintre Sebastià Junyent de dos.** Barcelona. [Summer]/1900 [1903]. Pen & ink & brush & ink wash on paper. [20,7 x 19] 21 x 18,5 cm. Sotheby's. #419, N10973, 07/20/22. Formerly Christie's. #402, 9774, 11/07/01.

**OPP.00:071**; PP.00:126; Z.VI:274; AC.09:91p; AC.50:47p; PE.01a:88p

**Caricatures de Bóers et études.** Barcelona. [Summer/1900]. Pen, sepia ink & graphite pencil on paper. [24,3 x 22] 29,2 x 22 cm. Museu Picasso, Barcelona. Donation 1970.

**OPP.00:080**; C:820; MPB:110.338; PP.00:143; BA.03a\*:28; BA.18\*:68p; EV.10\*:67p; HC.88:1.3; PA.19d:34p; TO.97\*:145





**Enterrement rural.** Barcelona. [Summer]/1900.  
Pastel on paper. 24 x 30,6 cm. Museu Picasso,  
Barcelona. Donation 1970.

**OPP.00:092**; MPB:110.233; PP.00:116;  
CS.00\*:201p; EV.10\*:251p; EV.15:139p;  
PJ.02\*:107; TK.02\*:n/a; TO.94\*:149;  
TO.97\*:167; UW.84:29b

---

**Femme assise (Juan Oliva Bridgman, El clam de les  
verges).** Barcelona. [Winter~Spring] Summer/1900.  
Charcoal on paper (Reproduced in Joventut, 07/12/1900). 48  
x 31 cm. Sotheby's. #423, L04006, 02/04/04.

**OPP.00:105**; P.I:458; PP.00:151; Z.VI:245; AB.97b\*:17;  
AC.81:67p; BP.62:39; GI.95\*:n/a; JP.66:57; JR.91:155p;  
MM.97:29p; TO.95a:108p; TO.96a:108p; WR.12b:87;  
WR.80:28p





**Nu masculin.** Barcelona. [Summer]/1900. Pen & ink on paper. 23,1 x 8,5 cm. Museu Picasso, Barcelona. Donation 1970.

**OPP.00:109**; C:859; MPB:110.323; PP.00:137

---

**Couple de personnes âgées.** Barcelona. [Summer]/1900. Pen & ink on paper. 17,5 x 11,7 cm. Museu Picasso, Barcelona. Donation 1970.

**OPP.00:110**; MPB:110.604; PP.00:173; PB.81\*:6A.38





**Portrait de Isidre Nonell.** [Barcelona]. [Summer]/1900.  
Charcoal, watercolor & ink on paper. 22 x 16 cm. Christie's. #23,  
7666, 10/02/08.

**OPP.00:116;** PP.00:160

**Caricature de Manuel Pallarès et  
autoportrait de l'artiste.** Barcelona.  
[Summer]/1900. Pen & sepia ink on paper.  
13,3 x 21 cm. Museu Picasso, Barcelona.  
Donation 1970.

**OPP.00:125;** C:735; MPB:110.414;  
PP.00:157; BA.03a\*:33; PB.21:24;  
PB.81\*:6A.20; TO.95a\*:150; TO.97:239p;  
YP.13\*:8





**Études et caricatures.** Barcelona. [Summer]/1900. Pen, wash, ink & blue pencil on lined paper [Obverse of *Études et caricatures*]. 12,9 x 21,1 cm. Museu Picasso, Barcelona. Donation 1970.

**OPP.00:126**; MPB:110.413; PP.00:146; BA.03a\*:34; BA.12c\*:n/a; TK.02\*:n/a; TO.97\*:95a

---

**Études et caricatures.** Barcelona. [Summer]/1900. Pen & ink on lined paper [Reverse of *Études et caricatures*]. 12,9 x 21,1 cm. Museu Picasso, Barcelona. Donation 1970.

**OPP.00:127**; MPB:110.413r; PP.00:147; BA.03a\*:34r; TO.97\*:95b





**Les toits de Barcelone: atelier dans Riera de Sant Joan.** Barcelona. [1899~] [Summer]/1900. Pastel on paper. 50,9 x 37,8 cm. Private collection.

**OPP.00:129**; DB.I:23; P.I:382; PP.00:121;  
Z.VI:250; TO.94:223p; UP.00:31

---

**Riera de Sant Joan (Étude).** Barcelona. [Summer]/1900. Conté pencil & charcoal on sheet of paper. 35 x 26,2 cm. Museu Picasso, Barcelona. Donation 1970.

**OPP.00:157**; MPB:110.898; P.I:362; PP.00:199;  
BL.91:101p; CR.07:117p; JG.84\*:97; JR.91:150p;  
PA.19h:4; PB.81\*:8A.8; TO.94\*:148; TO.97:116p



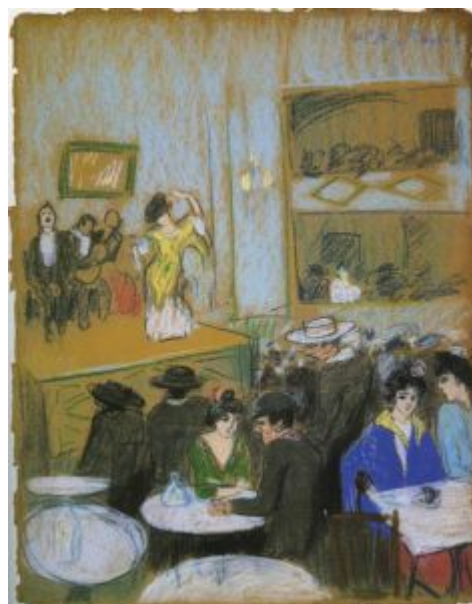


**Caricature de Émile Zola.** Barcelona [Paris]. [Summer]/1900. Green pencil on paper. 14 x 8,8 cm. Museu Picasso, Barcelona. Donation 1970.

**OPP.00:158**; C:739; MPB:110.441; P.I:367; PP.00:159; EV.10\*:248p; NS.01:65; TO.97\*:n/a

**Café-Concert.** Barcelona. [Summer]/1900. Pastel & crayon on paper. 59 x 46 cm. The Israel Museum, Jerusalem. (Inv B97.0555). The Sam Spiegel Collection bequeathed to American Friends of the Israel Museum.

**OPP.00:168**; PP.00:124; Z.VI:279; AC.46:30; JR.91:157p; JR.93b\*:n/a; PA.20j:35p







**L'appel du virgins (Étude).** Barcelona.  
[Summer]/1900. Ink wash on paper [Obverse of  
*Étude pour Femme assise (Juan Oliva Bridgman, El  
clam de les verges)*]. 46,9 x 30,9 cm. Museu  
Picasso, Barcelona. Donation 1970.

**OPP.00:247**; C:869; MPB:110.341; PP.00:148;  
AB.97a\*:n/a; BA.04b\*:n/a; PB.81\*:5A.10;  
TO.95a\*:111a; TO.97:182p

---

**La Paix (Paz).** Barcelona.  
[Summer]/1900. Pen & ink on paper. 13,4  
x 20,9 cm. Museu Picasso, Barcelona.

**OPP.00:249**; MPB:110.836r; PP.00:194





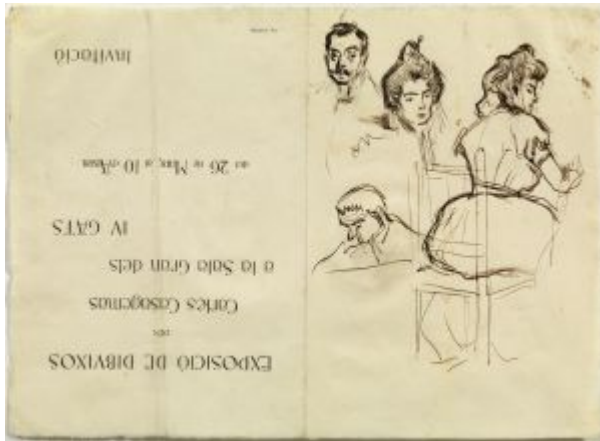
**Nu féminin et homme les mains dans les poches.** Barcelona.  
[Summer]/1900. Conté pencil on paper. 31,2 x 16,2 cm. Museu Picasso,  
Barcelona. Donation 1970.

**OPP.00:253**; C:905; MPB:110.564; PP.00:171

**Jambes croisées (Étude).** [Barcelona].  
[Summer]/1900. Conté crayon on paper. 30,6 x 24 cm.  
Museu Picasso, Barcelona. Donation 1970.

**OPP.00:254**; MPB:110.233r; PP.00:117





**Portrait de Josep Cardona et autres études.**  
Barcelona. [Summer]/1900. Pen & ink on laid paper. 20 x 27,5 cm. Museu Picasso, Barcelona. Donation 1970.

**OPP.00:255**; C:516; MPB:110.408; PP.00:153;  
EV.14\*:123p; PB.81\*:7A.6; TO.95a:221;  
TO.96a:221

**Homme au baton et tête d'homme.**  
[Barcelona]. [Summer]/1900. Pen & graphite pencil [red ink] on paper. 22 x 24,3 cm. Museu Picasso, Barcelona. Donation 1970.

**OPP.00:257**; MPB:110.338r; PP.00:144





**Décoration pour un cadre.** Paris. [Summer]/1900 [1902~1903].  
Oil on wood. 122,8 x 82 cm. Museu Picasso, Barcelona. Donation  
1970.

**OPP.00:268**; C:224; MPB:110.002; PP.00:123; BA.12b\*:237p;  
CK.04:74p; FF.05\*:n/a; JR.91:v; MF.01:80p; PA.19h\*:163;  
WR.12b:159

**Femme assise sur le quai.** Barcelona.  
[Summer]/1900. Pen on paper. 21,8 x 31,8  
cm. Museu Picasso, Barcelona. Donation  
1970.

**OPP.00:269**; C:679; MPB:110.771;  
PP.00:189; CR.07:51p; TO.94\*:153





**Le baiser et études divers.** Paris. [Summer]/1900. Pen & ink on paper. 21 x 13,3 cm. Museu Picasso, Barcelona. Donation 1970.

**OPP.00:274**; MPB:110.414r; PP.00:158; PB.81\*:6A.20r

---

**Scène érotique et autres croquis.** Paris. [Summer]/1900. Pen & ink on paper. 13,2 x 20,9 cm. Museu Picasso, Barcelona. Donation 1970.

**OPP.00:275**; MPB:110.287; PP.00:131; JG.84\*:57





**Tête d'homme et figure masculin.** Barcelona. [Summer]/1900. Pen & ink on paper. 8,5 x 23,1 cm. Museu Picasso, Barcelona. Donation 1970.

**OPP.00:283**; MPB:110.323r; PP.00:138

**Caricatures d'un Bòer et d'un Anglais; études de têtes.** Barcelona. [Summer]/1900. Pen & ink on paper. 22 x 16 cm. Museu Picasso, Barcelona. Donation 1970.

**OPP.00:284**; C:821; MPB:110.399; PP.00:152;  
BA.18\*:95p; PA.19d:38p





**Femme en bas et des bottes et homme avec foulard, de profil.**  
Barcelona. [Summer]/1900. Pen & ink on paper. 17,5 x 11,7 cm.  
Museu Picasso, Barcelona. Donation 1970.

**OPP.00:286**; MPB:110.604r; PP.00:174; JC.01a\*:7; PB.81\*:6A.38r

**Croquis de caricatures.** Barcelona.  
[Summer]/1900. Pen & ink on paper. 12,9  
x 20,7 cm. Museu Picasso, Barcelona.  
Donation 1970.

**OPP.00:287**; MPB:110.298r; PP.00:136;  
PB.81\*:3A.2R





**Études de femme.** Barcelona. [Summer]/1900. Pen & ink on paper. 10,1 x 16,2 cm. Museu Picasso, Barcelona. Donation 1970.

**OPP.00:290**; C:506; MPB:110.268r; PP.00:128

---

**Étude de figure féminin per 'Ser o no ser' (Joan Oliva i Bridgman).** Barcelona. [Summer]/1900. Conté pencil on paper. 46,8 x 30,5 cm. Museu Picasso, Barcelona. Donation 1970.

**OPP.00:291**; MPB:110.801r; PP.00:187







**Croquis divers.** Barcelona. [Summer]/1900. Conté pencil on paper. 24,6 x 23 cm. Museu Picasso, Barcelona. Donation 1970.

**OPP.00:292**; MPB:110.336; PP.00:142

---

**Croquis divers.** Barcelona. [Summer]/1900. Pen, ink & conté pencil on paper. 20,6 x 13 cm. Museu Picasso, Barcelona. Donation 1970.

**OPP.00:293**; MPB:110.293; PP.00:133





**Croquis divers.** Barcelona. [Summer]/1900. Pen & ink on paper. 20,6 x 13 cm. Museu Picasso, Barcelona. Donation 1970.

**OPP.00:294**; MPB:110.293r; PP.00:134



**Torero.** Barcelona. [Summer]/1900. Pen & ink on paper. 17,9 x 17 cm. Museu Picasso, Barcelona. Donation 1970.

**OPP.00:295**; MPB:113.295; MG.10a\*:n/a



**Croquis divers.** Barcelona. [Summer]/1900. Conté pencil on paper. 11,3 x 17,2 cm. Museu Picasso, Barcelona. Donation 1970.

**OPP.00:296**; MPB:110.276r; PP.00:130

---

**Trois nus féminins.** Barcelona. [Summer]/1900. Pen & ink on paper. 20,6 x 12,6 cm. Museu Picasso, Barcelona. Donation 1970.

**OPP.00:299**; C:900; MPB:110.296; PP.00:135





**Profil de femme.** Barcelona. [Summer]/1900. Pen & ink, & red pencil on paper. 25,8 x 6,2 cm. Museu Picasso, Barcelona. Donation 1970.

**OPP.00:300**; MPB:110.329r; PP.00:140

**Deux têtes de femme.** Barcelona. [Summer]/1900. Pen, ink & color pencil on paper. 4 x 13,2 cm. Museu Picasso, Barcelona. Donation 1970.

**OPP.00:301**; MPB:111.653; PP.00:198





**Profil de femme et femme au chapeau.**

Barcelona. [Summer]/1900. Conté pencil on paper.  
11,3 x 17,2 cm. Museu Picasso, Barcelona.  
Donation 1970.

**OPP.00:302**; MPB:110.276; PP.00:129

**Deux études de têtes de femme.**

Barcelona. [1899~1900] [Summer]/1900.  
Green pencil & lead pencil on paper. 20,8 x  
20,2 cm. Museu Picasso, Barcelona.  
Donation 1970.

**OPP.00:303**; C:886; MPB:110.334;  
PP.9900:136





**Deux petit nus et tête de femme.** Barcelona. [Summer]/1900. Pen, ink & color pencil on paper. 16,1 x 31,2 cm. Museu Picasso, Barcelona. Donation 1970.

**OPP.00:304**; MPB:110.564r; PP.00:172

**Deux toreros d'après Goya et caricature.** Barcelona. [Summer]/1900. Pen, ink & color pencil on paper. 14,4 x 16 cm. Museu Picasso, Barcelona. Donation 1970.

**OPP.00:305**; MPB:110.418r; PP.00:162; PB.81\*:6A.35r





**Croquis égyptien et autres croquis.** Barcelona. [Summer]/1900.  
Pen & ink on paper. 20,8 x 13,1 cm. Museu Picasso, Barcelona.  
Donation 1970.

**OPP.00:307**; MPB:110.835r; PP.00:193

**Écrit.** Barcelona. [Summer]/1900. Pen & ink on paper. 22  
x 16 cm. Museu Picasso, Barcelona. Donation 1970.

**OPP.00:308**; MPB:110.399r





**Scène de bordel.** Barcelona. [Summer]/1900. Pen & ink on paper. 13,3 x 20,8 cm. Museu Picasso, Barcelona. Donation 1970.

**OPP.00:310**; C:904; MPB:110.258r; PP.00:127; JC.01a\*:8

---

**Porte-drapeau.** Barcelona. [Summer]/1900. Pen & ink on paper. 20,8 x 13,1 cm. Museu Picasso, Barcelona. Donation 1970.

**OPP.00:311**; MPB:110.835; PP.00:192







**Étude pour Femme assise (Juan Oliva Bridgman, El clam de les verges)**. Barcelona. [Summer]/1900. Conté pencil on paper [Reverse of *L'appel du virgins (Étude)*]. 46,9 x 30,9 cm. Museu Picasso, Barcelona. Donation 1970.

**OPP.00:312**; C:197; MPB:110.341r; PP.00:149; BA.12c\*:n/a; BL.91:62; JG.84\*:98; PB.81\*:5A.10r; TL.89\*:6; TO.95a\*:111b; VC.89\*:n/a

---

**Fragment de dessin**. Barcelona. [Summer]/1900. Conté pencil on paper. 23 x 16,2 cm. Museu Picasso, Barcelona. Donation 1970.

**OPP.00:314**; MPB:110.628r; PP.00:175





**Couple espagnol.** Málaga. [1899~] [Summer]/1900 [~1901]. Charcoal & watercolor. 31,8 x 26,7 cm. Private collection. Formerly Sotheby's. #313, 04/05/89.

**OPP.00:349**; PP.99:239; EV.14\*:148p; JR.91:179p

---

**Chambre d'hotel.** Barcelona. [Summer]/1900. Charcoal & color crayon [Oic]. 19,5 x 20 cm. Private collection. Formerly Christie's. #111, 06/30/92.

**OPP.00:385**; PP.00:125; Z.XXI:158





**Couple à cheval.** Barcelona. [Summer]/1900.  
Gouache [OïC]. 22,5 x 32,5 cm. Private collection.

**OPP.00:386**; PP.00:114; Z.XXI:141

---

**Course de taureaux.** Barcelona.  
[Summer]/1900. Varnished pastel [OïC].  
12,5 x 19 cm. Private collection.

**OPP.00:387**; DB.A:1; PP.00:110;  
Z.XXI:149





**Portrait de Ramon Suriñach i Senties.** Barcelona. [Summer~Fall]/1900. Charcoal on paper. 20 x 13 cm. Private collection.

**OPP.00:054**; PP.00:203; AB.97b\*:23; AC.09:139p; TO.95a\*:203

**Autoportrait et études de Fuentes, Martí, Pompeu Gener.** Barcelona~Paris. [1899~] Summer~Fall/1900. Pen & ink & graphite pencil on watermarked paper [Obverse of *Croquis des parapluies ouverts*]. 32 x 22 cm. Museu Picasso, Barcelona. Donation 1970.

**OPP.00:067**; C:182; MPB:110.676; PP.9900:268; AN.88\*:n/a; BA.09b\*:n/a; BL.91:66p; EC.16\*:19; FR.91\*:n/a; JG.84\*:71; JR.91:160p; MA.94\*:n/a; MM.97\*:39; NM.95:129p; NS.01:61; PB.21:18; PB.81\*:6A.13; PD.06\*:n/a; ST.88\*:n/a; TK.02\*:n/a; TO.95a\*:38; TO.97\*:137a; WR.80:29p; WR.96:116p; YP.13\*:5





**Nu féminin, de profil.** Paris. [Summer~Fall]/1900. [Pen & ink on paper] Graphite pencil on wood. [22,3] 20,3 x 13,8 cm. Museu Picasso, Barcelona. Donation 1970.

**OPP.00:256**; MPB:110.213r; PP.00:201

---

**Portrait de vieille (À Pere Manyac).**  
Barcelona [Paris]. [Summer~Fall]/1900. Conté pencil & touches of red pencil on varnished paper. [12,6 x 11,7] 12,9 x 11,9 cm. Museu Picasso, Barcelona. Donation 1970.

**OPP.00:263**; C:215; MPB:110.045;  
PP.00:204; JR.91:163p



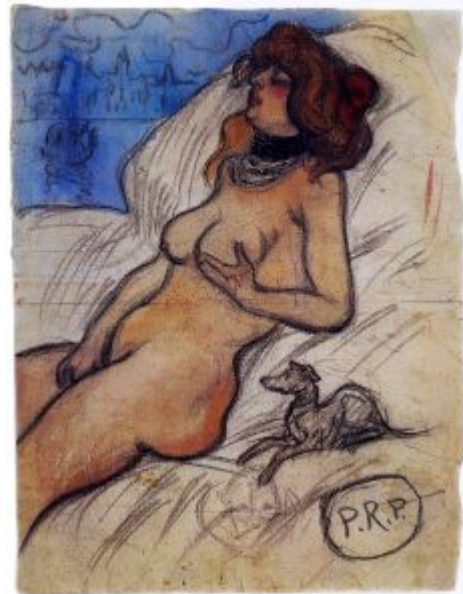


**La Boija (La folle)**. Barcelona. 6-September/1900. Ink (Published in *Catalunya Artística*, 09/06/00) [After *La Boija (La folle)*]. S/U. Private collection.

**OPP.00:188**; P.I:463; AC.81:67p; JP.66:58

**Femme qui rêve de Venise**. Paris. [Mid-Fall]/1900. Charcoal & watercolor on paper. 31 x 24 cm. Lionel Prejger Collection, Paris.

**OPP.00:056**; PP.00:224; JC.98:121p





**Nu allongé.** Barcelona. [Fall]/1900. India ink on paper. 11,9 x 17,9 cm. Private collection.

**OPP.00:316**; RD.11\*:6

---

**Scène de rue.** Barcelona. [Fall]/1900. Oil on canvas. 61,1 x 46,3 cm. Pola Museum of Art, Hakone, Kanagawa, Japan. Formerly Von Hirsch Collection, Basel.

**OPP.00:338**; PP.00:316; JG.84\*:108





**Femme assise et tête d'homme.** Barcelona. [Fall]/1900.  
Charcoal on paper laid down on card. 38,7 x 29,5 cm. Christie's.  
#1005, 12070, 05/13/16.

---

**OPP.00:375**

---

**Femme au mantelet de fourrure.** Barcelona. [Fall]/1900.  
Crayon on paper. 10,7 x 7,5 cm. Private collection.

---

**OPP.00:388**; PP.00:211; Z.XXI:155







**Tête de femme: profil.** Barcelona. [Fall]/1900. Crayon on paper. 10,7 x 7,5 cm. Private collection.

**OPP.00:389**; PP.00:212; Z.XXI:156

---

**Femme debout.** Barcelona. [Fall]/1900. Charcoal. S/U. Private collection.

**OPP.00:390**; PP.00:238; Z.VI:272





**Lavandière et chien.** Barcelona. [Fall]/1900. Colored pencils or crayons [OïC]. 23 x 16 cm. Private collection.

**OPP.00:398**; PP.00:217; Z.XXI:142

**L'etreinte forcée.** Paris. [Fall]/1900. Brush & ink on paper. 30,5 x 21 cm. Private collection. Formerly Sotheby's. #126, 11/07/91.

**OPP.00:401**; PP.00:236





**L'homme à la pèlerine.** Paris. [Fall] [Early-October]/1900. Oil on canvas. 80,8 x 50 cm. Von der Heydt Museum, Wuppertal. (Inv G.0754). Dr. Eduard Freiherr von der Heydt Bequest, Ascona.

**OPP.00:058**; DB.II:21; PP.00:227; Z.I:16; CG.93:30; JG.84\*:109; JR.91:168p; KR.11\*:12p; MM.97\*:44; MS.24\*:1; MU.55\*:1; PA.14a\*:n/a; UP.00:49; WO.61\*:240

**Le cancan.** Paris. [Fall] [Early-October]/1900. Pastel on paper. [41 x 55] 38,5 x 53,8 cm. Hiroshima Museum of Art. Formerly Paul Pétridès Collection, Paris.

**OPP.00:146**; DB.II:16; PP.00:301; Z.I:40; AC.46:21; BF.21:29p; BH.06\*:234p; BP.62:32; DC.87:16; JC.40:36p; JL.71:204p; TI.71:85p





**Femme voilée.** Paris. [Fall] [Early-October]/1900. Oil on canvas [OIC]. 66 x 51 cm. James Howley Collection, NY.

**OPP.00:147**; DB.II:19; P.I:506; PP.00:305; Z.VI:383; NY.36a\*:10; PH.36a\*:7; TP.58\*:n/a; WA.36\*:n/a

---

**Petite fille vue de dos.** Paris. [Fall] [Early-October]/1900. Watercolor [OIC]. 16,6 x 9 cm. Andrew Linz Collection, NY.

**OPP.00:150**; DB.DII:6; PP.00:257; Z.XXI:412; HK.65:20p





**Deux femmes au chat.** Paris. [Fall] [Early-October]/1900. Charcoal on white Ingres paper [Reverse of *Danseuse de cancan*]. 47 x 31,3 cm. Lilo Behr Collection, Stuttgart.

**OPP.00:152**; DB.DII:2; PP.00:226; Z.XXI:225; FR.65a\*:4; GM.81\*:1b; JG.84\*:115

---

**Deux femmes.** Paris. [Fall] [Early-October]/1900. Colored crayons on white paper [OïC]. 20,5 x 27 cm. The Abrams Family Collection, NY.

**OPP.00:153**; DB.DII:1; PP.00:269; Z.XXI:135; HJ.83:11p; HJ.96:11p





**Trois danseuses de cancan.** [Barcelona] Paris. [Fall] [Early-October]/1900 [~1901]. Colored chalks on paper [OIC]. 13,3 x 19,5 cm. Stolen. Formerly Museu del Cau Ferrat, Sitges.

**OPP.00:154**; DB.DII:4; PP.00:209; Z.XXI:151; EV.08:115; EV.10:62p

---

**Femme assise.** [Paris]. [Fall] [Early-October]/1900. Pencil & pastel on paper. 16,8 x 14,7 cm. Fundació Palau, Caldes d'Estrac. (Inv 0001025).

**OPP.00:155**





**Les amants dans la rue (L'étreinte).** Paris. [Fall] [Early-October]/1900 [1901]. Charcoal. 18 x 13 cm. Private collection.

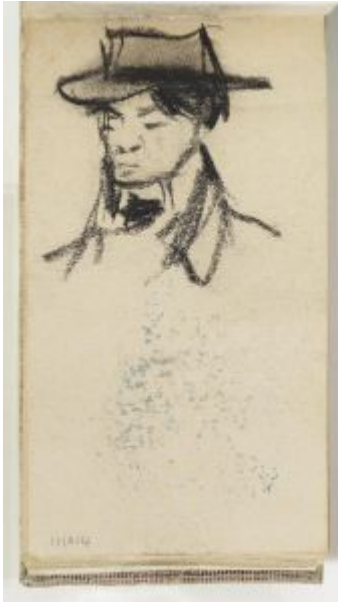
**OPP.00:160**; P.I:501; PP.00:235; Z.VI:320; AC.46:122; BP.62:88; BS.55:360p; EM.55:13p

---

**Le baiser.** Paris. [Fall] [Early-October]/1900. Charcoal on paper [Obverse of *Arrastre (croquis)*]. [21,9 x 14,6] 22 x 15 cm. Private collection, Barcelona. Formerly Christie's. #149, 06/27/89.

**OPP.00:193**; P.I:496; PP.00:233





**Buste d'homme au chapeau.** Paris. [Fall] [Early-October]/1900. Conté pencil on paper. 10,5 x 6 cm. Museu Picasso, Barcelona. Donation 1970.

**OPP.00:194;** MPB:111.014; P.I:487; PP.00:282; PB.21:27; YP.13\*:n/a

---

**Quatre têtes et deux personnages debout.** Paris. [Fall] [Early-October]/1900. Charcoal & pastel on paper [Oic]. 12,5 x 20,5 cm. Private collection.

**OPP.00:195;** P.I:488; PP.00:270; Z.XXI:170







**Têtes de cochers et cheval.** Paris. [Fall] [Early-October]/1900. Charcoal & colored pencil on paper [OïC]. 13 x 20,5 cm. Gustau Camps Collection, Barcelona.

**OPP.00:196**; P.I:489; PP.00:240

**Cheval et carrosse.** Paris. [Fall] [Early-October]/1900. Ink on paper. 10,8 x 17,1 cm. The Norton Simon Museum, Pasadena, CA. (Inv P.1976.2). Gift of Mr. & Mrs. Harold P. Ullman.

**OPP.00:239**





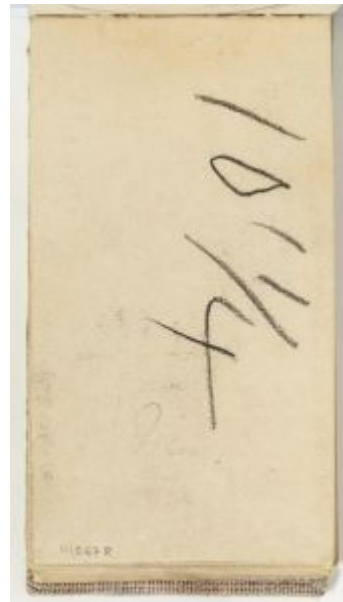
**Album.** Paris. [Fall] [Early-October]/1900. Graphite pencil. 10,5 x 6 cm. Museu Picasso, Barcelona. Donation 1970.

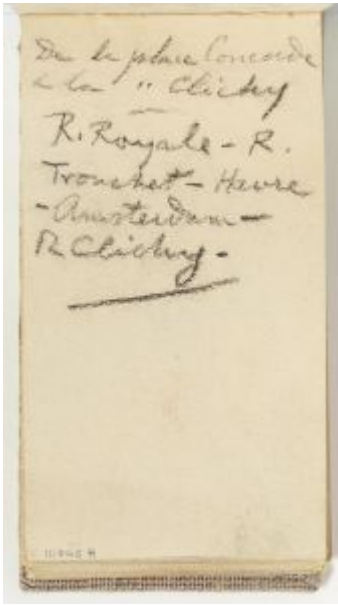
**OPP.00:250**; MPB:110.910; TO.97\*:n/a

---

**Annotation.** Paris. [Fall] [Early-October]/1900. Conté pencil. 6 x 10,5 cm. Museu Picasso, Barcelona. Donation 1970.

**OPP.00:251**; MPB:111.047r





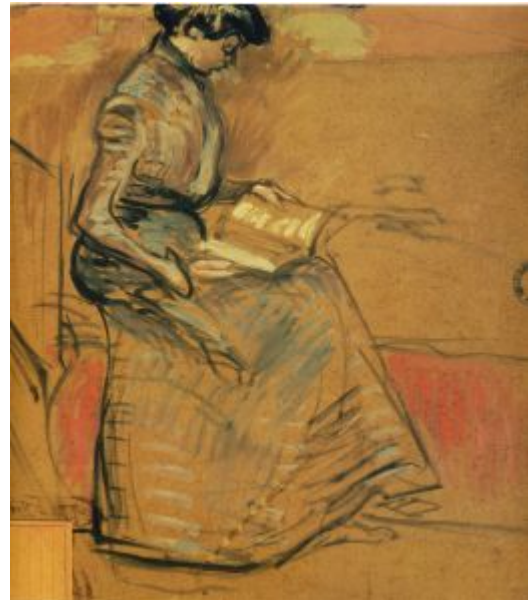
**Annotations.** Paris. [Fall] [Early-October]/1900. Conté pencil on paper. 10,5 x 6 cm. Museu Picasso, Barcelona. Donation 1970.

**OPP.00:252**; MPB:111.046r

---

**Femme lisant.** Paris. [Fall] [Early-October]/1900. Watercolor & charcoal on cardboard [Reverse of *L'étreinte dans la mansarde*]. 56 x 52 cm. The Pushkin State Museum of Fine Arts, Moscow.

**OPP.00:278**; AP.11:16p; AP.89:2; AP.97:25p





**Catalans dans Montmartre (Pichot, Mañach, Casagemas, Brossa, Picasso, Gener).** Paris. [Fall] [Early-October]/1900. Oil on wood panel. 24,1 x 18,7 cm. The Barnes Foundation, Merion, PA. (Inv BF.2049).

**OPP.00:279**; PP.00:315; AC.23:n/p; BW.13:73p; EV.14\*:161p; JR.80:161p; JR.91:161p; MM.11a:20p; MM.97:32p; PA.21g:24p; TO.95a:159p; TO.96a:159p

---

**Autoportrait (Picture -n Misere Humane).** Paris. [Fall] [Early-October]/1900. Pen & sepia ink on paper. 20,5 x 12,6 cm. Private collection. Formerly Christie's. #135, 05/18/83.

**OPP.00:337**; PP.00:309; AB.00\*:16; JR.91:217p; TO.95a:158p; TO.96a:158p





**Têtes et figures.** Paris. [Fall] [Early-October]/1900. Conté crayon. 13,2 x 21 cm. Ivan L. Best Collection.

**OPP.00:340**; PP.00:271; Z.VI:327; AB.46:17p; RI.41\*:189

**Dans le café (Les buveurs).** Paris. [Fall] October~December/1900. Oil on canvas. 25,4 x 37,7 cm. Yale University Art Gallery. (Inv 1949.294). Gift of Alice B. Toklas to the Gertrude Stein and Alice B. Toklas Papers, Yale Collection of American Literature.

**OPP.00:148**; DB.II:20; P.I:505; PP.00:304; Z.I:33; BW.13:136p; CK.10:79; EB.70:4p; PA.01a\*:n/a; SF.09\*:1





**Lettre à Ramón Reventós.** Paris. 12-October/1900. Ink on paper. S/U. Private collection.

**OPP.00:343**; EV.14\*:179p; TO.95a:152p; TO.96a:152p

**Le Moulin de la Galette.** Paris. Mid-October/1900. Oil on canvas. 89.7 x 116.8 cm. The Solomon R. Guggenheim Museum, NYC. (Inv 78.2514.T34). Thannhauser Collection; Gift Justin K. Thannhauser, 1978.

**OPP.00:001**; DB.II:10; P.I:509; PP.00:303; Z.I:41; AB.39a\*:5; AB.39a\*:5; AB.46:18p; AB.57\*:15p; AC.46:20; AC.81:72p; AP.92:4; AP.97:21p; BH.06\*:251p; BW.13:17p; CG.93:8; CK.10:77; DA.03:2; DC.87:25; DQ.74:206p; EC.02:47; EV.10:94p; GB.87:13; GC.96:52-53p; GP.96:65p; HD.01:6; HD.04:7p; JB.08:111p; JC.40:36p; JL.66\*:3; JL.71:203p; JR.91:166p; JS.94:39p; MA.22b:81p; MM.11a\*:8; MM.97\*:40; MU.18:3; NM.95:40p; NS.01:286; NY.41b\*:n/a; NY.47a\*:3; NY.65b\*:30; OD.96:8-9p; PA.19h:38; PD.09:16p; PH.58\*:4; PJ.02:65p; RB.97:33p; RP.60\*:4; RP.81:1.7; RT.14:74; TC.92:72p; TH.75:5; UP.00:40; WR.80\*:32p; WS.02:33p; WW.73:33p; WW.91:58p





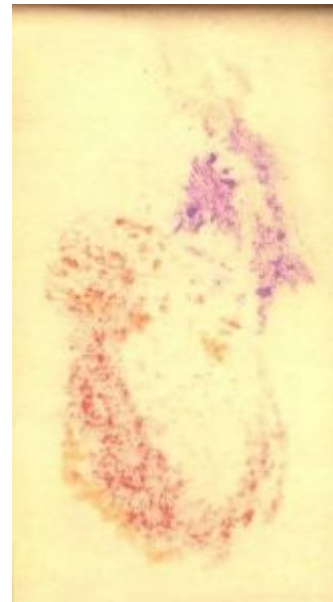
**Midinette de Paris.** Paris. [Mid-October~ Mid-December]/1900. Watercolor. 10,5 x 6 cm. Museu Picasso, Barcelona. Donation 1970.

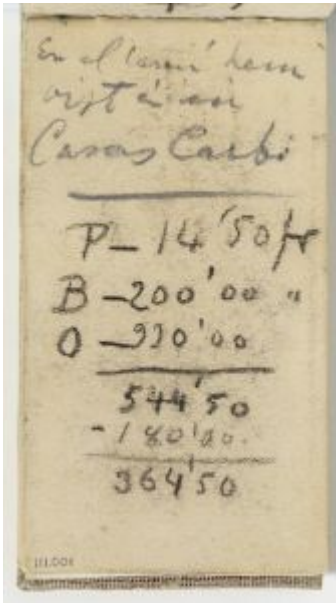
**OPP.00:099**; MPB:111.038; GG.86\*:19.38

---

**Midinette de Paris.** Paris. [Mid-October~ Mid-December]/1900. Watercolor. 10,5 x 6 cm. Museu Picasso, Barcelona. Donation 1970.

**OPP.00:100**; MPB:111.039; GG.86\*:19.39





**Annotations.** Paris. [Mid-October~ Mid-December]/1900. x. 10,5 x 6 cm.  
Museu Picasso, Barcelona.

**OPP.00:206**; MPB:111.001; GG.86\*:19.1r

**Vendeuse de gaufre.** Paris. [Mid-October~ Mid-December]/1900.  
Lead pencil, conté pencil & touches of pastel on paper. 10,5 x 6 cm.  
Museu Picasso, Barcelona. Donation 1970.

**OPP.00:207**; MPB:111.002; PP.00:241; GG.86\*:19.2







**Femme se baissant de dos.** Paris. [Mid-October~ Mid-December]/1900. Pencil & watercolor. 10,5 x 6 cm. Museu Picasso, Barcelona. Donation 1970.

**OPP.00:208**; MPB:111.003; PP.00:243; GG.86\*:19.3

**Nourrice assise et enfant.** Paris. [Mid-October~ Mid-December]/1900. Lead pencil, blue pencil & watercolor. 10,5 x 6 cm. Museu Picasso, Barcelona. Donation 1970.

**OPP.00:209**; MPB:111.004; PP.00:245; GG.86\*:19.4





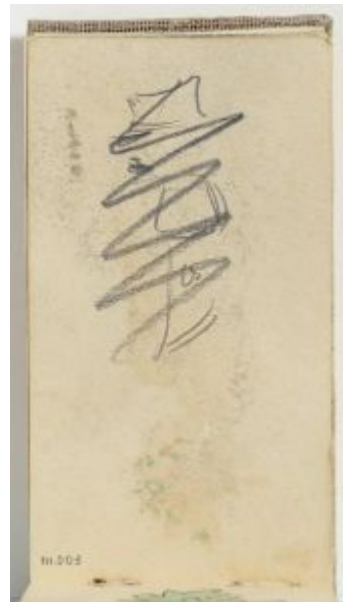
**Nourrice et enfant de dos.** Paris. [Mid-October~ Mid-December]/1900. Lead pencil, red pencil & watercolor on paper. 10,5 x 6 cm. Museu Picasso, Barcelona. Donation 1970.

**OPP.00:210**; MPB:111.003r; PP.00:244; GG.86\*:19.3r

---

**Traits.** Paris. [Mid-October~ Mid-December]/1900. Lead pencil on paper. 10,5 x 6 cm. Museu Picasso, Barcelona. Donation 1970.

**OPP.00:211**; MPB:111.005; PP.00:247; GG.86\*:19.5





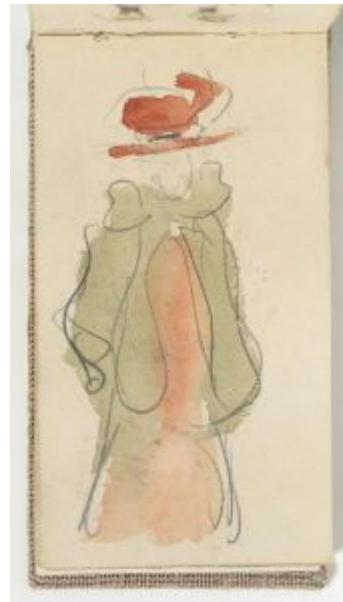
**Femme au chapeau de profil.** Paris. [Mid-October~ Mid-December]/1900. Lead pencil, blue pencil & watercolor on paper. 10,5 x 6 cm. Museu Picasso, Barcelona. Donation 1970.

**OPP.00:212**; MPB:111.004r; PP.00:246; GG.86\*:19.4r

---

**Femme au chapeau.** Paris. [Mid-October~ Mid-December]/1900. Lead pencil & watercolor on paper. 10,5 x 6 cm. Museu Picasso, Barcelona. Donation 1970.

**OPP.00:213**; MPB:111.005r; PP.00:248; GG.86\*:19.5r





**Femme et enfant.** Paris. [Mid-October~ Mid-December]/1900. Lead pencil & watercolor on paper. 10,5 x 6 cm. Museu Picasso, Barcelona. Donation 1970.

**OPP.00:214**; MPB:111.006r; PP.00:250; GG.86\*:19.6r

---

**Nourrice au chapeau de profil.** Paris. [Mid-October~ Mid-December]/1900. Lead pencil & watercolor on paper. 10,5 x 6 cm. Museu Picasso, Barcelona. Donation 1970.

**OPP.00:215**; MPB:111.007; PP.00:251; GG.86\*:19.7





**Porteur.** Paris. [Mid-October~ Mid-December]/1900. Lead pencil & watercolor on paper. 10,5 x 6 cm. Museu Picasso, Barcelona. Donation 1970.

**OPP.00:216**; MPB:111.007r; PP.00:252; GG.86\*:19.7r

---

**Femme à la blouse à pois.** Paris. [Mid-October~ Mid-December]/1900. Lead pencil & watercolor on paper. 10,5 x 6 cm. Museu Picasso, Barcelona. Donation 1970.

**OPP.00:217**; MPB:111.008; PP.00:253; GG.86\*:19.8





**Femme à la canne.** Paris. [Mid-October~ Mid-December]/1900. Lead pencil, watercolor & pastel on paper. 10,5 x 6 cm. Museu Picasso, Barcelona. Donation 1970.

**OPP.00:218**; MPB:111.008r; PP.00:254; GG.86\*:19.8r; PD.06\*:n/a

---

**Femme assise lisant.** Paris. [Mid-October~ Mid-December]/1900. Lead pencil, watercolor & pastel on paper. 10,5 x 6 cm. Museu Picasso, Barcelona. Donation 1970.

**OPP.00:219**; MPB:111.009; PP.00:255; GG.86\*:19.9





**Femme assise de dos.** Paris. [Mid-October~ Mid-December]/1900. Lead pencil, watercolor & pastel on paper. 10,5 x 6 cm. Museu Picasso, Barcelona. Donation 1970.

**OPP.00:220**; MPB:111.010; PP.00:258; BL.91:101p; GG.86\*:19.10

---

**Fillette à la casquette rouge de dos.** Paris. [Mid-October~ Mid-December]/1900. Lead pencil, watercolor & pastel on paper. 10,5 x 6 cm. Museu Picasso, Barcelona. Donation 1970.

**OPP.00:221**; MPB:111.009r; PP.00:256; GG.86\*:19.9r;  
PD.06\*:n/a





**Deux têtes de profil.** Paris. [Mid-October~ Mid-December]/1900. Lead pencil & watercolor on paper. 10,5 x 6 cm. Museu Picasso, Barcelona. Donation 1970.

**OPP.00:222**; MPB:111.015r; PP.00:272; GG.86\*:19.15r

---

**Buste d'homme au chapeau.** Paris. [Mid-October~ Mid-December]/1900. Lead pencil on paper. 10,5 x 6 cm. Museu Picasso, Barcelona. Donation 1970.

**OPP.00:223**; MPB:111.022r; PP.00:290; GG.86\*:19.22r







**Lignes et losanges.** Paris. [Mid-October~ Mid-December]/1900. Lead pencil on paper. 6 x 10,5 cm. Museu Picasso, Barcelona. Donation 1970.

**OPP.00:224**; MPB:111.035; PP.00:284;  
BA.12b\*:235p; GG.86\*:19.35

---

**Lignes et losanges.** Paris. [Mid-October~ Mid-December]/1900. Lead pencil on paper. 6 x 10,5 cm. Museu Picasso, Barcelona. Donation 1970.

**OPP.00:225**; MPB:111.034r; PP.00:283;  
BA.12b\*:235p; GG.86\*:19.34r





**Lignes.** Paris. [Mid-October~ Mid-December]/1900. Lead pencil on paper. 6 x 10,5 cm. Museu Picasso, Barcelona. Donation 1970.

**OPP.00:226**; MPB:111.035r; PP.00:285; GG.86\*:19.35r

---

**Fillette au chapeau portant un pistolet et des bottes à éperons.** Paris. [Mid-October~ Mid-December]/1900. Lead pencil & watercolor on paper. 10,5 x 6 cm. Museu Picasso, Barcelona. Donation 1970.

**OPP.00:227**; MPB:111.040; PP.00:291; GG.86\*:19.40





**Fillette de dos.** Paris. [Mid-October~ Mid-December]/1900. Lead pencil, watercolor & pastel on paper. 10,5 x 6 cm. Museu Picasso, Barcelona. Donation 1970.

**OPP.00:228**; MPB:111.040r; PP.00:292; GG.86\*:19.40r

---

**Femme au chapeau et à la cape noire.** Paris. [Mid-October~ Mid-December]/1900. Lead pencil, watercolor & pastel on paper. 10,5 x 6 cm. Museu Picasso, Barcelona. Donation 1970.

**OPP.00:229**; MPB:111.041; PP.00:293; GG.86\*:19.41





**Femme assise cousant.** Paris. [Mid-October~ Mid-December]/1900. Lead pencil, color pencil, watercolor & pastel on paper. 10,5 x 6 cm. Museu Picasso, Barcelona. Donation 1970.

**OPP.00:230**; MPB:111.041r; PP.00:294; GG.86\*:19.41r

---

**Femme assise cousant.** Paris. [Mid-October~ Mid-December]/1900. Lead pencil, watercolor & pastel on paper. 10,5 x 6 cm. Museu Picasso, Barcelona. Donation 1970.

**OPP.00:231**; MPB:111.042; PP.00:295; GG.86\*:19.42





**Femme au chapeau rouge.** Paris. [Mid-October~ Mid-December]/1900. Lead pencil, watercolor & pastel on paper. 10,5 x 6 cm. Museu Picasso, Barcelona. Donation 1970.

**OPP.00:232**; C:208; MPB:111.042r; PP.00:296; GG.86\*:19.42r

**Femme assise de dos à la cape à carreaux.** Paris. [Mid-October~ Mid-December]/1900. Lead pencil, watercolor & pastel on paper. 10,5 x 6 cm. Museu Picasso, Barcelona. Donation 1970.

**OPP.00:233**; C:242; MPB:111.043; PP.00:297; GG.86\*:19.43





**Femme de profil au chapeau.** Paris. [Mid-October~ Mid-December]/1900. Lead pencil & watercolor on paper. 10,5 x 6 cm. Museu Picasso, Barcelona. Donation 1970.

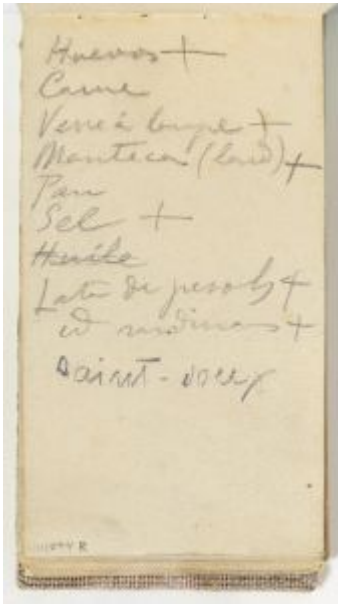
**OPP.00:234**; MPB:111.044; PP.00:299; GG.86\*:19.44

---

**Annotations.** Paris. [Mid-October~ Mid-December]/1900. Pencil. 10,5 x 6 cm. Museu Picasso, Barcelona. Donation 1970.

**OPP.00:235**; MPB:111.045r; GG.86\*:19.45





**Annotations de Carles Casagemas.** Paris. [Mid-October~ Mid-December]/1900. Pencil. 10,5 x 6 cm. Museu Picasso, Barcelona. Donation 1970.

**OPP.00:236**; MPB:111.044r; GG.86\*:19.44r

---

**Parisienne.** Paris. [Mid-October~ Mid-December]/1900. Watercolor. 10,5 x 6 cm. Museu Picasso, Barcelona.

**OPP.00:237**; MPB:111.037; GG.86\*:19.37





**Dans la pièce (La loge)**. Paris. [Mid-October~ Mid-December]/1900. Pastel on paper. 47,5 x 52,5 cm. Museu Picasso, Barcelona. Plandiura Acquisition, 1932.

**OPP.00:009**; DB.II:15; MPB:4.275; P.I:490; PP.00:228; Z.I:38; AC.46:24; BA.55\*:7; CK.10:76; CR.98:45p; FS.82:31p; GP.96:67p; JM.93:21p; MM.11a\*:7; PA.07a\*:79p; PD.06\*:14p; PH.30\*:63; RS.88:30p; TO.95a\*:156; TO.97\*:176; UP.00:42; WS.11:24p

**Deux femmes attablées et mains au porte-plume (Étude)**. Paris. [Mid-October~ Mid-December]/1900 [1901]. Conté pencil & colored pencil on paper. 21 x 13 cm. José María Catá Collection, Barcelona.

**OPP.00:010**; P.I:483; PP.00:268; Z.XXI:255; FC.00\*:4







**Deux femmes au cafe.** [Madrid] [Barcelona] Paris. [Mid-October~ Mid-December]/1900 [Late-April~Mid-May]/1901. Watercolor & ink on paper. 13,4 x 20,3 cm. Museu del Cau Ferrat, Sitges. (Inv 30.702). Formerly Ignacio Zuloaga Collection, Barcelona; Santiago Rusiñol Collection, Barcelona.

**OPP.00:011**; DB.DIV:3; P.I:486; PP.01:015; Z.XXI:261; EV.08:108; EV.10\*:62p; FC.00\*:7; JF.94a:9; JG.84\*:105; JP.66:65; PL.89:25

**Deux femmes assises.** [Toledo] [Málaga] [Madrid] Paris. [Mid-October~ Mid-December]/1900 [February~April/1901]. Conté pencil, ink, colored pencil & watercolor. 13,4 x 20,3 cm. Museu del Cau Ferrat, Sitges. (Inv 30.703).

**OPP.00:012**; DB.DIII:12; P.I:485; PP.01:014; Z.XXI:260; EV.08:105; EV.10\*:62p; FC.00\*:5; JG.84\*:104





**Petite fille en habits du dimanche.** Paris. [Mid-October~ Mid-December]/1900. Lead pencil, red pencil & watercolor on paper. 10,5 x 6 cm. Museu Picasso, Barcelona.

**OPP.00:013**; MPB:111.006; P.I:482; PP.00:249; GG.86\*:19.6

**Bonne avec bébé dans ses bras.** Paris. [Mid-October~ Mid-December]/1900. Lead pencil & watercolor on paper. 10,5 x 6 cm. Museu Picasso, Barcelona.

**OPP.00:014**; MPB:111.011; P.I:480; PP.00:263; GG.86\*:19.11





**Bonne avec deux enfants.** Paris. [Mid-October~ Mid-December]/1900.  
Lead pencil & watercolor on paper. 10,5 x 6 cm. Museu Picasso, Barcelona.

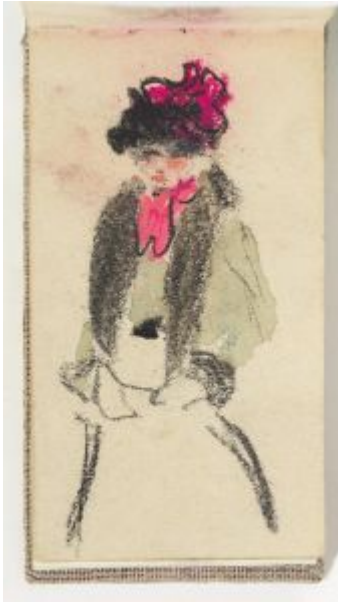
**OPP.00:015**; MPB:111.010r; P.I:479; PP.00:259; BL.91:101p;  
GG.86\*:19.10r

---

**Midinette de Paris.** Paris. [Mid-October~ Mid-December]/1900.  
Pastel on paper. 10,5 x 6 cm. Museu Picasso, Barcelona.

**OPP.00:016**; C:244; MPB:111.038r; P.I:475; P.IV:508; PP.00:261;  
GG.86\*:19.38





**Dame avec chapeau et écharpe autour du cou.** Paris. [Mid-October~ Mid-December]/1900. Watercolor & pastel on paper. 10,5 x 6 cm. Museu Picasso, Barcelona.

**OPP.00:017**; C:884; MPB:111.002r; P.I:476; PP.00:242; GG.86\*:19.2r

---

**Prêtre.** Paris. [Mid-October~ Mid-December]/1900. Lead pencil, colored pencil & watercolor on paper. 10,5 x 6 cm. Museu Picasso, Barcelona.

**OPP.00:018**; MPB:111.013r; P.I:477; PP.00:262; BA.09a\*:n/a; BL.91:101p; GG.86\*:19.14r





**Femme assise, visage plein.** Paris. [Mid-October~ Mid-December]/1900. Lead pencil, watercolor & pastel on paper. 10,5 x 6 cm. Museu Picasso, Barcelona.

**OPP.00:019**; MPB:111.043r; P.I:478; PP.00:298; GG.86\*:19.43r; GP.96:67p

**Parisienne.** Paris. [Mid-October~ Mid-December]/1900. Pastel on paper. 10,5 x 6 cm. Museu Picasso, Barcelona.

**OPP.00:020**; C:243; MPB:111.037r; P.I:474; PP.00:260; GG.86\*:19.37r





**Cochers.** Paris. [Mid-October~ Mid-December]/1900. Charcoal & colored pencil on paper. 13 x 20,5 cm. Museu Picasso, Barcelona. Formerly Luis Plandiura Collection.

**OPP.00:098**; MPB:4.778; PP.00:239; Z.VI:275; AC.46:124; PD.06\*:n/a; PJ.02\*:110; TK.02\*:n/a; TO.95a\*:155; TO.97\*:175

---

**Baraque foraine, Montmartre.** [Paris]. [Mid-Fall] [Mid-October~ Mid-December]/1900 [1901]. Oil on canvas. 38,1 x 46,3 cm. Museu Picasso, Barcelona. Formerly Carl-August Jung Collection, Wuppertal-Elberfeld; Fritz Andreae Collection, Cologne; Christie's #65, 6735, 06/24/03; Christie's. #32, 11/03/81.

**OPP.00:101**; DB.V:63; MPB:113.113; P.I:504; PP.00:307; Z.XXI:227; CK.10:316; DC.87:20; DO.07\*:17; MU.55\*:2; NM.06:42p; PA.01a\*:n/a; PA.21g\*:31p; WW.91:62p





**Femme en rouge.** [Paris]. [Mid-October~ Mid-December]/1900 [1900]. Color crayon with charcoal. 15,2 x 23,5 cm. Sotheby's. #255, 05/12/99.

**OPP.00:103**; PP.00:205

---

**Frommage a la creme!** [Paris]. [Mid-October~ Mid-December/1900]. Pencil & brown pencil on paper. 19 x 11,7 cm. Sotheby's. #300, N07991, 05/06/04.

**OPP.00:106**; PP.00:311





**A la belle tomate!**. [Paris]. [Mid-October~ Mid-December/1900]. Pencil on paper. 11,7 x 19 cm. Sotheby's. #299, N07991, 05/06/04.

**OPP.00:107**; PP.00:310

---

**Étude de danseuses.** Paris. [Mid-October~ Mid-December]/1900. Blue wax crayon on paper. 15,2 x 23,2 cm. Christie's. #222, 1656, 05/03/06.

**OPP.00:117**; PP.0001:031; EV.08:114







**Étude de danseuses.** Paris. [Mid-October~ Mid-December]/1900. Blue wax crayon on paper. 15,2 x 23,2 cm. Christie's. #223, 1656, 05/03/06.

**OPP.00:118**; PP.0001:032

---

**Opérations mathématiques.** Paris. [Mid-October~ Mid-December]/1900. Conté pencil & graphite on paper. 10,5 x 6 cm. Museu Picasso, Barcelona. Donation 1970.

**OPP.00:162**; MPB:110.910r; GG.86\*:19.1





**Dans la rue.** Paris. Mid-Fall/1900. Oil on canvas [Overlayer of *Dans le cabaret*]. 47,6 x 66,7 cm. San Francisco Museum of Modern Art. (Inv 50.6097). Bequest of Harriet Lane Levy.

**OPP.00:068**; DB.II:11; P.I:503; PP.00:306; Z.VI:302; AB.39a\*:7; AB.39a\*:7; AB.46:18p; BF.21\*:187p; BF.21:95p; CT.23\*:4; DL.67\*:3; EV.08:57; EV.10:98p; EV.14\*:180p; MM.97\*:42; PA.04a\*:33; PL.89:14; SF.37b\*:n/a; SF.48b\*:1; SF.48e\*:n/a; SF.57a\*:n/a; SF.60a\*:n/a; TO.64\*:6; WS.95a\*:9

---

**Les plastrons.** Paris. Mid-Fall/1900 [~1901]. Oil on panel. [17 x 26] 13,6 x 22,5 cm. The Museum of Fine Arts, Boston. (Inv 1970.475). Gift of Mrs. Charles Sumner Bird (Julia Appleton Bird), 1970.

**OPP.00:069**; DB.II:17; P.I:620; PP.01:265; Z.I:35; AC.46:57; BF.21\*:118p; BF.21:26p; BO.91\*:148; CK.10\*:75; DC.87:17; FS.82:25p; MM.97\*:B43; PA.01a\*:n/a





**Les amants dans la rue.** Paris. [Mid-Fall]/1900. Oil on canvas. [65 x 49,8] 65,8 x 50,8 cm. Christie's. #17, 1532, 06/24/14. Formerly Christie's. #0020, 1900, 11/06/07; Sotheby's. #19, 06/27/88; Thannhauser Collection.

**OPP.00:131**; DB.II:13; P.I:497; PP.00:230; Z.I:25; AC.46:88; AC.50:83; AS.60:2; JC.40:35p; PA.04a\*:32; TO.94:190p; TO.97:237p

---

**Étude de cinq têtes de personnages.** [Barcelona] [Paris]. [Mid-Fall/1900]. Pencil & color pencil. 21,5 x 14 cm. Digard. 2007.

**OPP.00:132**; PP.00:213; PA.07b\*:n/a





**Femme pensive regardant vers la gauche.** [Barcelona] [Paris]. [Mid-Fall/1900]. Pastel & charcoal on paper. 21 x 13 cm. Digard. 2007.

**OPP.00:133**; PP.00:214; PA.07b\*:n/a

---

**Pierrot et danseuse (La danseuse bleue).** Paris. Mid-Fall/1900. Oil on canvas. 38 x 46 cm. Sotheby's. #30, N09860, 05/14/18. Formerly 6489, 11/04/93.

**OPP.00:134**; DB.II:23; P.I:507;  
PP.00:302; Z.XXI:224; AP.11:18p;  
DC.87:19; GE.56\*:9; JG.84\*:107;  
JR.91:164p; MM.00:13p; PA.44b\*:404;  
TO.95a:156p; TO.96a:156p; UP.00:39;  
WA.80a:18; WR.80\*:31p; WW.91:59p





**Femme debout au chapeau bleu.** Paris. [Mid-Fall]/1900. Ink & colored pencil [OIC]. 15,3 x 5,5 cm. Private collection.

**OPP.00:138**; DB.DII:7; PP.00:300; Z.I:43; KZ.32\*:253

**La danseuse.** Barcelona. [Mid-Fall]/1900 [1901]. [Pastel] Conté crayon on paper. [18,5] 17,8 x 12 cm. Maxime L. Hermanos Collection, NY.

**OPP.00:142**; DB.DI:10; P.I:523; PP.00:207; Z.XXI:213





**Deux femmes se promenant par un jour de vent.** Barcelona. [Mid-Fall]/1900. Charcoal & colored chalk on paper [Obverse of *Visage et main*]. 13,4 x 20,3 cm. Museu del Cau Ferrat, Sitges. (Inv 30.704).

**OPP.00:143**; DB.DI:11; PP.00:210; Z.XXI:152; DC.91:8p; EV.08:111; EV.10\*:62p; FC.00\*:6; JG.84\*:106

---

**La danseuse.** Barcelona. [Mid-Fall]/1900. Conté crayon on paper. 17,8 x 12 cm. Max Hermanos Collection, NY.

**OPP.00:144**; DB.DI:12; PP.00:208; Z.XXI:214





**Dans le cabaret.** Paris. [Mid-Fall]/1900.  
Reconstruction of oil on canvas through X-  
radiography & high-definition digital photography  
[Underlayer of *Dans la rue*]. 47,6 x 66,7 cm. San  
Francisco Museum of Modern Art. (Inv 50.6097).  
Bequest of Harriet Lane Levy.

**OPP.00:341**

---

**Visage et main.** Barcelona. [Mid-  
Fall]/1900 [~1901]. Charcoal on paper  
[Reverse of *Deux femmes se promenant  
par un jour de vent*]. 13,4 x 20,3 cm.  
Museu del Cau Ferrat, Sitges. (Inv 30.704).

**OPP.00:352**; EV.08:112





**Deux personnages.** [Paris]. [Mid-October~ Mid-December]/1900~1901. Charcoal & crayon on paper laid on board. 21 x 13,3 cm. Sotheby's. #207, L09607, 06/25/09. Formerly Christie's. #321, 05/13/99; Sotheby's. #109, 05/16/84.

**OPP.00:102**; PP.01:441; HN.00\*:45

---

**Étude de danseuses.** [Paris]. [Mid-October~ Mid-December]/1900~1901. Color pencil & wax crayon on paper. 15,3 x 23,3 cm. Sotheby's. #361, N08241, 11/08/06.

**OPP.00:119**







**La fin du numéro.** Paris. [Mid-October]/1900 ~ [Summer]/1901. Charcoal & pastel on canvas. 73 x 47 cm. Museu Picasso, Barcelona. Plandiura Acquisition, 1932.

**OPP.00:026**; DB.IV:11; MPB:4.270; P.I:654; PP.01:269; Z.I:30; BA.55\*:13; BL.91:102p; CK.10\*:68; CL.06\*:n/a; CR.98:47p; CS.00\*:199p; DC.87:18; DQ.74:124p; GC.96:52p; MA.17b\*:47; ON.66:5p; PA.01b\*:n/a; PA.04a\*:35; PA.20j:61p; PA.96a\*:n/a; TO.95b:28p; TO.97\*:184

**Lettre de Carles Casagemas et Picasso à Cinto Reventós.** Paris. 25-October/1900. Ink on paper. 17,4 x 10,8 cm. Dr. Jacint Reventós i Conti Collection, Barcelona.

**OPP.00:077**; EV.14\*:173p; TO.95a\*:209





**Lettre de Carles Casagemas et Picasso à Cinto Reventós: No es una serp.** Paris. 25-October/1900. Ink on paper. 17,4 x 10,8 cm. Dr. Jacint Reventós i Conti Collection, Barcelona.

OPP.00:078; EV.14\*:173p; JC.01a:84p; TO.95a\*:209

**Lettre de Carles Casagemas et Picasso à Cinto Reventós.**

Paris. 25-October/1900. Charcoal & colored pencil on paper. 17,4 x 10,8 cm. Museu Picasso, Barcelona. Donation Lluís Bieto, 1997.

OPP.00:095; MPB:113.025b; TO.97\*:174





**Lettre de Carles Casagemas et Picasso à Cinto Reventós.** Paris. 25-October/1900. Charcoal & colored pencil on paper. 17,4 x 10,8 cm. Museu Picasso, Barcelona. Donation Lluís Bieto, 1997.

OPP.00:096; MPB:113.026r; TO.97\*:174

**Lettre de Carles Casagemas et Picasso à Cinto Reventós.** Paris. 25-October/1900. Charcoal & colored pencil on paper. 17,4 x 10,8 cm. Museu Picasso, Barcelona. Donation Lluís Bieto, 1997.

OPP.00:097; MPB:113.025c; PP.00:314; JC.01a\*:10; MM.11a\*:n/a; PA.20j\*:34; TO.97\*:174





**Monsieur Gerard et Monsieur Cortada.** Paris. 25-October/1900. Charcoal & colored pencil on paper. 21 x 13 cm. Dr. Jacint Reventós i Conti Collection, Barcelona.

**OPP.00:185**; P.I:493; PP.00:219; Z.VI:295; EV.14\*:172p; JG.84\*:103a; PA.21g\*:27p; TO.95a:209.2; TO.96a:209.2

**Femme et chien.** Paris. 25-October/1900. Charcoal & colored pencil on paper. 21 x 13 cm. Dr. Jacint Reventós i Conti Collection, Barcelona.

**OPP.00:197**; P.I:491; PP.00:220; Z.VI:290; CK.10:65; EV.08:55; EV.10\*:88p; EV.14\*:172p; JG.84\*:103c; PA.21g\*:27p; TO.95a\*:209.3; TO.95a:278p; TO.96a:278p





**Diseuse.** Paris. 25-October/1900. Charcoal & colored pencil on paper. 21 x 13 cm. Dr. Jacint Reventós i Conti Collection, Barcelona.

**OPP.00:198;** P.I.:492; PP.00:221; Z.VI:289; CK.10:66;  
EV.14\*:173p; JG.84\*:103b; JR.91:158p; PA.21g\*:27p;  
TO.95a\*:209.6; TO.95a:278p; TO.96a:278p



**Scène de café.** Paris. 25-October/1900. Charcoal & colored pencil on paper. 21 x 13 cm. Dr. Jacint Reventós i Conti Collection, Barcelona.

**OPP.00:199;** P.I.:494; PP.00:223; Z.VI:294; EV.08:106;  
EV.14\*:173p; JG.84\*:103d; PA.21g\*:27p; TO.95a\*:209.9;  
TO.95a:279p; TO.96a:279p



**Tête de femme de face et de profil.** Paris. 25-October/1900.  
Charcoal & colored pencil on paper. 21 x 13 cm. Dr. Jacint Reventós i  
Conti Collection, Barcelona.

**OPP.00:200**; P.I:495; PP.00:222; Z.VI:293; EV.14\*:173p;  
TO.95a\*:209.7; TO.95a:279p; TO.96a:279p

**Lettre de Carles Casagemas et Picasso à Cinto Reventós.**

Paris. 25-October/1900. Ink on paper. 17,4 x 10,8 cm. Dr.  
Jacint Reventós i Conti Collection, Barcelona.

**OPP.00:345**; EV.14\*:172p; TO.95a\*:209





**Lettre de Carles Casagemas et Picasso à Cinto Reventós.** Paris. 25-October/1900. Ink on paper. 17,4 x 10,8 cm. Dr. Jacint Reventós i Conti Collection, Barcelona.

**OPP.00:346**; EV.14\*:173p; TO.95a\*:209



**Lettre de Carles Casagemas et Picasso à Cinto Reventós.** Paris. 25-October/1900. Ink on paper. 17,4 x 10,8 cm. Dr. Jacint Reventós i Conti Collection, Barcelona.

**OPP.00:347**; EV.14\*:172p; TO.95a\*:209



**La sortie de l'Exposition Universelle, Paris (Odette, Picasso, Pichot, Utrillo, Casagemas et Germaine).** Paris. [End-October]/1900.

Charcoal & color pencils on paper. 47,6 x 62 cm. E and R Cyzer 20th Century Art. Formerly Sotheby's. #17, N09139, 05/07/14; Manuel Barbie Gallery. 2009; Sotheby's. #22, N07838, 11/05/02.

**OPP.00:073**; PP.00:267; AC.09:53p;  
EV.14\*:177p; JR.91:172p; MA.17b\*:8;  
MM.11a\*:3; MM.78\*:26; PA.19h:13; PA.37c\*:1;  
TO.95a:154p; TO.96a:154p

---

**Le départ de l'Exposition Universelle.**  
Paris. [Fall] [End-October]/1900. Charcoal  
& pastel [OIC]. 14,3 x 22,6 [21,6] cm.  
Galerie Beyeler, Basel. Formerly Sotheby's.  
#215, 05/19/83.

**OPP.00:202**; P.I:481; PP.00:266;  
TO.95a:155p; TO.96a:155p







**Portrait de Germaine Gargallo (à Germaine).** Paris. [End-October~ Mid-December]/1900 [Summer/1901]. Oil on panel. [21,5 x 14,3] [21,6 x 14,8] 22 x 15 cm. Christie's. #16, 1532, 06/24/14. Formerly Christie's. #24, 2164, 05/06/09; Christie's. #46, 9770, 11/06/01; Thannhauser Collection.

**OPP.00:070**; P.I:641; PP.01:268; Z.XXI:153; PA.01a\*:n/a

---

**La femme au chat.** Paris. [End-October~ Mid-December]/1900. Pastel on cardboard. [45 x 51] 44,8 x 52,7 cm. Sotheby's. #52, L06002, 02/07/06.

**OPP.00:115**; DB.DII:3; PP.00:225; Z.XXI:154; LY.53a\*:9





**Picasso et Manuel Pallarès contemplant la tour Eiffel.** Barcelona. [Early-November]/1900. Pen & ink on paper [Obverse of *Portrait d'homme (Francisco Iturrino)*]. 8,8 x 11,1 cm. Museu Picasso, Barcelona. Donation 1970.

**OPP.00:066**; C:733; MPB:110.996; P.I:471; PP.00:218; BI.04\*:n/a; BL.91:101p; JR.91:162p; LE.21\*:1; MM.11a\*:1; MM.97\*:38; PA.19h:16; PA.21g:26p; PB.21:33; PB.81\*:7A.20; TK.02\*:n/a; TO.95a\*:149; TO.97\*:171a; YP.13\*:28

**Morphinomanes.** Paris. [Late-Fall]/1900 [1900~1901]. Oil & pastel on canvas. 55,2 x 46,4 cm. Sotheby's. #237, N11158, 05/17/23. Formerly Sotheby's. #52, N09710, 05/16/17.

**OPP.00:246**; PP.00:317; BE.51\*:53; BE.59\*:64; JR.91:168p





**Lettre de Carles Casagemas et Picasso à Cinto Reventós.** Paris. 11-November/1900. Ink on paper. S/U. Dr. Jacint Reventós i Conti Collection, Barcelona.

OPP.00:079; EV.14\*:176p; TO.95a\*:210

**Lettre de Carles Casagemas et Picasso à Cinto Reventós.** Paris. 11-November/1900. Ink on paper. S/U. Dr. Jacint Reventós i Conti Collection, Barcelona.

OPP.00:336; EV.14\*:176p; TO.95a\*:210





**Lettre de Carles Casagemas et Picasso à Cinto Reventós.** Paris. 19-November/1900. Charcoal & colored pencil on paper. 17,4 x 10,8 cm. Museu Picasso, Barcelona. Donation 1970.

**OPP.00:094**; MPB:113.025a; PP.00:313; PA.19h\*:19; PA.20j\*:35; TO.97\*:174

**Études dans une lettre de Picasso et Carles Casagemas à Ramón Reventós.**

Paris. 19-November/1900. Pen & ink on paper. S/U. Dr. Jacint Reventós i Conti Collection, Barcelona.

**OPP.00:344**; PP.00:312; Z.VI:288; EV.14\*:178p; TO.95a\*:211





**Les amants dans la rue (L'étreinte)**. Paris. [End-Autumn]/1900. Pastel on paper. 59 x 35 + 12,6 cm. Museu Picasso, Barcelona. Formerly Luis Pandiura Collection.

**OPP.00:002**; DB.II:12; MPB:4.263; P.I:498; PP.00:229; Z.I:24; AC.46:89; AC.81:32p; BA.55\*:10; BP.62:85; CR.98:44p; CS.00\*:N/I; DQ.74:233p; EV.10\*:100-101p; FS.82:32p; GB.87:7; GC.96:50p; GE.56\*:22; GP.96:66p; JC.01a\*:11; JF.94a:8; JM.93:22p; JR.91:169p; MM.00:15p; MM.11a\*:4; MU.18:88p; PA.07a\*:87p; PA.19h\*:40; PD.09:17p; RS.88:31p; TO.94\*:156; TO.95b:31p; TO.97\*:177; TU.86\*:n/a; UP.00:53; WR.12b:91; WW.91:52p

**L'étreinte dans la mansarde**. Paris. [End-Autumn]/1900. Oil on paper on cardboard [Obverse of *Femme lisant*]. 51,2 x 55,3 cm. The Pushkin State Museum of Fine Arts, Moscow. Formerly S. I. Shchukin Collection, Moscow.

**OPP.00:007**; DB.II:14; P.I:499; PP.00:231; Z.I:26; AP.11:15p; AP.89:1; AP.97:23p; BP.62:87; DA.03:1; GD.77:14p; HN.00\*:46; MM.97\*:41; MW.55\*:n/a; OD.96:11p; PA.54a\*:2; PD.65:26p; RP.60\*:271; TI.71:97p; TK.64\*:2; UP.00:52; WW.91:60p





**L'etrenite forcée.** Paris. [End-Autumn]/1900. Pastel on board. [47,5 x 38,5] 47,3 x 38,2 cm. Mugarbi Collection, New York. Formerly Sotheby's. #18, L16002, 02/03/16; Galerie Beyeler, Basel; Sotheby's. #217, 10/23/74.

**OPP.00:008**; DB.A:3; P.I:500; PP.00:237; AP.97:22p; BS.67b\*:2; CO.10\*:85; GC.96:51p; GP.96:68p; JR.91:169p; MA.17b\*:52; PA.01a\*:n/a; WI.71\*:1; WW.91:61p

---

**Le naufrage de la frégate Gneisenau dans le port de Málaga.** Málaga. December/1900~January/1901. Conté pencil on paper. 11,2 x 16,5 cm. Museu Picasso, Barcelona. Donation 1970.

**OPP.00:205**; MPB:110.706; P.I:183; PP.96:398; RI.13\*:217p





**Quatre personnages, arbre et charette.**

[Madrid]. [Winter]/1900~1901. [Crayon] Pen & ink on paper. [12,5 x 21,5] 13 x 22 cm.. The Court Gallery, Somerset. 2010. Formerly Christie's. #181, 12/03/96; Sotheby's. #117, 04/04/90; Marina Picasso Collection. (Inv 7056). Carnet 96.

**OPP.00:248**; PP.0001:019; MB.84\*:168; MP.81\*:16.15; MP.83\*:11; PA.88c\*:122; VE.81\*:16.15

---

**Danseur.** Barcelona. [Winter]/1900~1901. Conté crayon on paper. 21 x 12,5 cm. Marina Picasso Collection. (Inv 7054). Carnet 96. Courtesy Galerie Jan Krugier, Geneva.

**OPP.00:282**; PP.0001:017; MP.81\*:16.13; RD.00\*:14; RD.08\*:33p





**Fillettes.** Paris. [Winter]/1900~1901. Charcoal on paper. 11 x 17,5 cm. Marina Picasso Collection. Sketchbook 99. Courtesy Galerie Jan Krugier, Geneva.

**OPP.00:331**; WS.95a\*:14n

**La vieille mendiante.** Barcelona. [Winter/1900 [~1901]. Gouache, watercolor, pen & ink on paper. [15,9] 16 x 10,8 cm. Sotheby's. #40, L05002, 02/08/05.

**OPP.00:113**; DB.I:26; PP.01:114; Z.XXI:138; TO.95a\*:162







**Études avec portraits de Teresita Blasco et Carles Casagemas.** [Málaga] Barcelona. [Winter/1900~1901] [Early/1901]. Pen, ink & conté pencil on paper. [14 x 16,7] 14,4 x 16 cm. Museu Picasso, Barcelona. Donation 1970.

**OPP.00:124**; MPB:110.418; P.I:514;  
PP.0001:033; BA.03a\*:32; EV.14\*:31p;  
PB.81\*:6A.35; RI.13\*:212-213p

---

**Danseuse.** Barcelona. [Winter]/1900~1901. Conté crayon on paper. 21 x 12,5 cm. Private collection, Germany. Formerly Marina Picasso Collection. (Inv 7051). Carnet 96.

**OPP.00:130**; PP.0001:014; MD.02\*:38p; MP.81\*:16.10;  
RD.00\*:15; RD.08\*:33p





**Jeune femme au chapeau.** Paris. [Winter]/1900~1901. Pastel, with brush and gray and blue wash, with touches of incising on tan wove paper, laid down on gray millboard, laid down on tan cardboard. [36 x 26] 36,5 x 27 cm. The Art Institute of Chicago. (Inv 1954.319). Bequest of Joseph Winterbotham.

**OPP.00:149**; DB.II:22; PP.01:086; Z.XXI:131; CH.36\*:30; CH.68a\*:1; CH.87\*:n/a

---

**Danseuse de cancan.** Paris. [Winter/1900~1901 [Fall/1901]. Brush on sprayed ground on paper [Obverse of *Deux femmes au chat*]. 47 x 31,3 cm. Lilo Behr Collection, Stuttgart.

**OPP.00:151**; DB.II:25; P.I:653; PP.01:383; Z.XXI:226; EV.08:116; FR.65a\*:4; GM.81\*:I; JG.84\*:115; UP.00:51





**Feuille d'études: femme dans un intérieur, têtes de femme et couple enlacé.** [Barcelona]. [Winter]/1900~1901. Pen, black & brown ink on paper. 15,4 x 23,6 [23,5] cm. Musée Picasso, Paris.

**OPP.00:244**; MPP:429; PP.01:026; BL.91\*:36; PA.07a\*:84p; TO.97:240p

**Homme tenant un couteau.** [Barcelona]. [Winter/1900~1901. Pen & India ink on paper [Reverse of *Danseuse de cancan et personnage debout*]. 32,5 x 25 cm. Musée Picasso, Paris.

**OPP.00:245**; MPP:436.v; PP.01:380; Z.XXI:222; BI.04\*:n/a; BL.91\*:37; PA.07a\*:98p; PA.21g\*:28p





**Filletes.** Paris. [Winter]/1900~1901. Charcoal on paper. 11 x 17,5 cm. Marina Picasso Collection. Sketchbook 99. Courtesy Galerie Jan Krugier, Geneva.

**OPP.00:318;** WS.95a\*:14b

**Filletes.** Paris. [Winter]/1900~1901. Charcoal on paper. 11 x 17,5 cm. Marina Picasso Collection. Sketchbook 99. Courtesy Galerie Jan Krugier, Geneva.

**OPP.00:319;** WS.95a\*:14a





**Fillette.** Paris. [Winter]/1900~1901. Charcoal on paper. 11 x 17,5 cm. Marina Picasso Collection. Sketchbook 99. Courtesy Galerie Jan Krugier, Geneva.

**OPP.00:320**; WS.95a\*:14c

**Fillettes.** Paris. [Winter]/1900~1901. Charcoal on paper. 11 x 17,5 cm. Marina Picasso Collection. Sketchbook 99. Courtesy Galerie Jan Krugier, Geneva.

**OPP.00:321**; WS.95a\*:14d





**Fillette.** Paris. [Winter]/1900~1901. Charcoal on paper. 11 x 17,5 cm. Marina Picasso Collection. Sketchbook 99. Courtesy Galerie Jan Krugier, Geneva.

**OPP.00:322**; WS.95a\*:14e

**Fillettes.** Paris. [Winter]/1900~1901. Charcoal on paper. 11 x 17,5 cm. Marina Picasso Collection. Sketchbook 99. Courtesy Galerie Jan Krugier, Geneva.

**OPP.00:323**; WS.95a\*:14f





**Fillette.** Paris. [Winter]/1900~1901. Charcoal on paper. 11 x 17,5 cm. Marina Picasso Collection. Sketchbook 99. Courtesy Galerie Jan Krugier, Geneva.

**OPP.00:324**; WS.95a\*:14g

---

**Fillette.** Paris. [Winter]/1900~1901. Charcoal on paper. 11 x 17,5 cm. Marina Picasso Collection. Sketchbook 99. Courtesy Galerie Jan Krugier, Geneva.

**OPP.00:325**; WS.95a\*:14h





**Fillettes.** Paris. [Winter]/1900~1901. Charcoal on paper. 11 x 17,5 cm. Marina Picasso Collection. Sketchbook 99. Courtesy Galerie Jan Krugier, Geneva.

**OPP.00:326;** WS.95a\*:14i

**Fillettes.** Paris. [Winter]/1900~1901. Charcoal on paper. 11 x 17,5 cm. Marina Picasso Collection. Sketchbook 99. Courtesy Galerie Jan Krugier, Geneva.

**OPP.00:327;** WS.95a\*:14j







**Fillette.** Paris. [Winter]/1900~1901. Charcoal on paper. 11 x 17,5 cm. Marina Picasso Collection. Sketchbook 99. Courtesy Galerie Jan Krugier, Geneva.

**OPP.00:328**; WS.95a\*:14k

---

**Fillette.** Paris. [Winter]/1900~1901. Charcoal on paper. 11 x 17,5 cm. Marina Picasso Collection. Sketchbook 99. Courtesy Galerie Jan Krugier, Geneva.

**OPP.00:329**; WS.95a\*:14l





**Fillette.** Paris. [Winter]/1900~1901. Charcoal on paper. 11 x 17,5 cm. Marina Picasso Collection. Sketchbook 99. Courtesy Galerie Jan Krugier, Geneva.

**OPP.00:330**; WS.95a\*:14m

**Homme assis à la canne et masque.** Paris. [Winter]/1900~1901. Pen, brush & India ink on paper [Obverse of *Homme au couteau et masques*]. 32,5 x 25 cm. Musée Picasso, Paris.

**OPP.00:339**; MPP:440.r; PP.0001:001; Z.XXI:203; BL.91\*:31; PA.21g\*:272p; SD.05\*:2





**Danseuse (La Boija).** Paris. [Winter]/1900~1901. Ink in black & brown paper. 17 x 17,5 cm. Hampel. #1037, 12/06/08.

**OPP.00:348**

---

**Scène d'assassinat.** Paris. [Winter]/1900~1901. India ink on paper. 33,7 x 22,9 cm. Private collection. Formerly Sotheby's. #406, 6489, 11/04/93.

**OPP.00:353**; BL.91:51p





**Danseuse.** Madrid. [Winter]/1900~1901. Ink & color pencil [OiC]. 13 x 22 cm. Marina Picasso Collection. (Inv 07042-07065). Carnet 96. Courtesy Galerie Jan Krugier, Geneva.

**OPP.00:354**; PP.0001:028; MP.81\*:16.23

---

**Femme assise dans un café.** Barcelona. [Winter]/1900~1901. Charcoal. 11 x 17,5 cm. Marina Picasso Collection. (Inv 07088). Carnet 99. Courtesy Galerie Jan Krugier, Geneva.

**OPP.00:355**; PP.0001:004; MP.81\*:15; PD.02\*:6





**Profil de femme au chapeau.** Madrid. [Winter]/1900~1901. Conté pencil on paper. 13 x 22 cm. José María Catá Collection, Barcelona. Formerly Marina Picasso Collection. (Inv 07042-07065). Carnet 96.

**OPP.00:356**; PP.0001:005; BA.86a\*:4; BC.85\*:17; FC.00\*:12; MP.81\*:16.1



**Profil de femme au chapeau.** Madrid. [Winter]/1900~1901. Ink & color pencil [OiC]. 13 x 22 cm. Marina Picasso Collection. (Inv 07042-07065). Carnet 96. Courtesy Galerie Jan Krugier, Geneva.

**OPP.00:357**; PP.0001:006; MP.81\*:16.2



**Deux profils d'homme.** Madrid. [Winter]/1900~1901. Ink & color pencil [OïC]. 13 x 22 cm. Marina Picasso Collection. (Inv 07042-07065). Carnet 96. Courtesy Galerie Jan Krugier, Geneva.

**OPP.00:358**; PP.0001:007; MP.81\*:16.3

---

**Deux musiciens.** Madrid. [Winter]/1900~1901. Ink & color pencil [OïC]. 13 x 22 cm. Marina Picasso Collection. (Inv 07042-07065). Carnet 96. Courtesy Galerie Jan Krugier, Geneva.

**OPP.00:359**; PP.0001:008; MP.81\*:16.4





**Dans la rue.** Madrid. [Winter]/1900~1901. Ink & color pencil [OIC]. 13 x 22 cm. Marina Picasso Collection. (Inv 07042-07065). Carnet 96. Courtesy Galerie Jan Krugier, Geneva.

**OPP.00:360**; PP.0001:009; MP.81\*:16.5

---

**Esquisse de têtes de femme barbu et femme.** Madrid. [Winter]/1900~1901. Ink & color pencil [OIC]. 13 x 22 cm. Marina Picasso Collection. (Inv 07042-07065). Carnet 96. Courtesy Galerie Jan Krugier, Geneva.

**OPP.00:361**; PP.0001:010; MP.81\*:16.6





**Femme à la cape.** Madrid. [Winter]/1900~1901. Pastel on paper. [13 x 22] 12,1 x 21 cm. Private collection, Furtwangen. Formerly Sotheby's. #192, 11/28/95; Marina Picasso Collection. (Inv 07042-07065). Carnet 96.

**OPP.00:362**; PP.0001:011; KR.11\*:17p;  
MD.02\*:35p; MP.81\*:16.7; RD.00\*:16; RD.11\*:5;  
RD.96\*:53

---

**Profil de femme au chapeau et au manteau.** Madrid. [Winter]/1900~1901. Conté pencil & blue & red pencil on paper. 13 x 22 cm. José María Catá Collection, Barcelona. Formerly Marina Picasso Collection. (Inv 07042-07065). Carnet 96.

**OPP.00:363**; PP.0001:012; BA.86a\*:5;  
FC.00\*:11; MP.81\*:16.8







**Nu au lit et femme au chapeau.** Madrid. [Winter]/1900~1901. Ink & color pencil [OiC]. 13 x 22 cm. Marina Picasso Collection. (Inv 07042-07065). Carnet 96. Courtesy Galerie Jan Krugier, Geneva.

**OPP.00:364**; PP.0001:013; MP.81\*:16.9

---

**Homme appuyé sur un baton.** Madrid. [Winter]/1900~1901. Ink & color pencil [OiC]. 13 x 22 cm. Marina Picasso Collection. (Inv 07042-07065). Carnet 96. Courtesy Galerie Jan Krugier, Geneva.

**OPP.00:365**; PP.0001:015; MP.81\*:16.11





**Danseur espagnole.** Madrid. Winter/1900~1901. Black crayon & pencil on paper. 12,7 x 21,7 cm. Christie's. #203, 10335, 02/05/15. Formerly Marina Picasso Collection. (Inv 07042-07065). Carnet 96.

**OPP.00:366**; PP.0001:016; MP.81\*:16.12

---

**Deux femmes assises.** Madrid. [Winter]/1900~1901. Ink & color pencil [OiC]. 13 x 22 cm. Marina Picasso Collection. (Inv 07042-07065). Carnet 96. Courtesy Galerie Jan Krugier, Geneva.

**OPP.00:367**; PP.0001:018; MP.81\*:16.14





**Matador.** Madrid. [Winter]/1900~1901. Ink & color pencil [OIC]. 13 x 22 cm. Marina Picasso Collection. (Inv 07042-07065). Carnet 96. Courtesy Galerie Jan Krugier, Geneva.

**OPP.00:368**; PP.0001:029; MP.81\*:16.24

---

**Danseuse.** Madrid. [Winter]/1900~1901. Ink & color pencil [OIC]. 13 x 22 cm. Marina Picasso Collection. (Inv 07042-07065). Carnet 96. Courtesy Galerie Jan Krugier, Geneva.

**OPP.00:369**; PP.0001:020; MP.81\*:16.16





**Deux danseuses.** Madrid. [Winter]/1900~1901. Ink & color pencil [OiC]. 13 x 22 cm. Marina Picasso Collection. (Inv 07042-07065). Carnet 96. Courtesy Galerie Jan Krugier, Geneva.

**OPP.00:370**; PP.0001:021; MP.81\*:16.17

---

**Danseuse.** Madrid. [Winter]/1900~1901. Ink & color pencil [OiC]. 13 x 22 cm. Marina Picasso Collection. (Inv 07042-07065). Carnet 96. Courtesy Galerie Jan Krugier, Geneva.

**OPP.00:371**; PP.0001:022; MP.81\*:16.18





**Danseuse.** Madrid. [Winter]/1900~1901. Ink & color pencil [Oic]. 13 x 22 cm. Marina Picasso Collection. (Inv 07042-07065). Carnet 96. Courtesy Galerie Jan Krugier, Geneva.

**OPP.00:372**; PP.0001:023; MP.81\*:16.19

---

**Danseuse.** Madrid. [Winter]/1900~1901. Ink & color pencil [Oic]. 13 x 22 cm. Marina Picasso Collection. (Inv 07042-07065). Carnet 96. Courtesy Galerie Jan Krugier, Geneva.

**OPP.00:373**; PP.0001:026; MP.81\*:16.21





**Deux danseuses.** Madrid. [Winter]/1900~1901. Black ink, pen & brush on paper. [22 x 13] 20,8 x 12 cm. Mount Street Galleries. 2012. Formerly Christie's. #81, 6434, 06/24/11; Christie's. #126, 5394, 12/10/08; Marina Picasso Collection. (Inv 7063). Carnet 96.

**OPP.00:374**; PP.0001:027; MB.84\*:n/a; MP.81\*:16.22; MP.83\*:n/a; PA.85\*:34p; PA.91c\*:n/a; VE.81\*:16.22

---

**Figure.** Barcelona. Winter/1900. Pen & ink on paper. S/U. Private collection.

**OPP.00:378**; PP.0001:003; Z.VI:510





**Deux figures.** Paris. [Winter]/1900~1901. Crayon on paper. 19 x 12 cm. Private collection.

**OPP.00:402**; PP.0001:035; GG.86\*:22.308p

---

**Homme en costume debout.** Paris. [Winter]/1900~1901. Crayon on paper. 18 x 11,5 cm. Private collection.

**OPP.00:403**; PP.0001:036; GG.86\*:23.308p





**Femme nue face à une serpent.** Paris. [Winter/1900]  
[~Spring/1901]. Pen & pencil on paper. 13 x 9 cm. Private  
collection.

**OPP.00:335**; PP.01:129; JC.01a:70p

**Carnet de Paris.** Paris. 1900. Mixed  
media. 10,5 x 6 cm. Museu Picasso,  
Barcelona. Donation 1970.

**OPP.00:163**; MPB:110.910c







**Esquisse.** [Barcelona]. 1900. Graphite pencil. 10,5 x 6 cm. Museu Picasso, Barcelona. Donation 1970.

**OPP.00:272**; MPB:111.021r

---

**Étude de tête.** Barcelona. 1900. Conté pencil & crayon on paper. 20,8 x 20,2 cm. Museu Picasso, Barcelona. Donation 1970.

**OPP.00:288**; MPB:110.334r; PP.00:141





**Visage et calculs.** Barcelona. 1900. Lead pencil & color pencil on paper. 9,3 x 15,3 cm. Museu Picasso, Barcelona. Donation 1970.

**OPP.00:309**; MPB:111.651; BA.12b\*:n/a

---

**Personnages.** Paris. 1900. India ink on paper. 30,9 x 19,9 cm. Paco Rebés Collection, Barcelona.

**OPP.00:333**; FC.00\*:8





**Tête de femme, chien et traces.** Barcelona. 1900. Conté pencil & watercolor on paper. 35,2 x 12,3 cm. Museu Picasso, Barcelona. Donation 1970.

**OPP.00:334**; MPB:110.794r

---

**Croquis.** Barcelona. 1900. Conté pencil on paper. 21,9 x 16 cm. Museu Picasso, Barcelona. Donation 1970.

**OPP.00:391**; MPB:110.832r; PP.9900:378





**Têtes de personnages.** Barcelona. 1900. Pen & ink on paper. 21,8 x 31,8 cm. Museu Picasso, Barcelona. Donation 1970.

**OPP.00:392**; MPB:110.771r; PP.00:190

**Portrait de Miquel Utrillo.** Barcelona. 1900. Sepia ink & pen & wash on paper. [8,5 x 7,8] 9,2 x 7,8 cm. Museu Picasso, Barcelona. Donation 1970.

**OPP.00:393**; C:165; MPB:110.260; PP.9900:019; EC.16\*:29; EV.08:37; EV.10\*:n/a; GS.09\*:n/a; HH.92:120p; TO.95a\*:93; VC.96a\*:n/a





**Opérations mathématiques.** Paris. 1900. Color pencils on paper. 9,3 x 15,3 cm. Museu Picasso, Barcelona. Donation 1970.

**OPP.00:394**; MPB:111.651r

---

**Trois femmes s'habillant.** Paris. 1900. Crayon on paper. 13 x 20,6 cm. Cincinnati Art Museum. (Inv 1965.171). Bequest of Mrs. J. Louis Ransohoff.

**OPP.00:395**





**La rue Lepic.** Paris. 1900. Oil on canvas. 53 x 68 cm. Yale University Art Gallery. (Inv 2022.8.1). Gift of Catherine G. Cahill and William L. Bernhard, B.A. 1954.

**OPP.00:397**; DB.A:5; PP.01:462

---

**Femme de profil et figure.** Barcelona. [1900]. Crayon on paper. 12 x 18 cm. Private collection.

**OPP.00:399**; PP.00:215; GG.86\*:21.11p





**Homme moustachu et femme se coiffant.**  
Barcelona. [1900]. Crayon on paper. 12 x 18 cm.  
Private collection.

**OPP.00:400**; PP.00:216; GG.86\*:21.18p

**Tête d'homme de profil.** Barcelona.  
1900. Pencil on paper. 20 x 27,5 cm.  
Museu Picasso, Barcelona.

**OPP.00:404**; MPB:110.408r





**Etreinte.** Paris. 1900~1901. Pencil on paper [Obverse of *Profil de femme*. 20,7 x 13,1 cm. Sotheby's. #288, L21004, 03/19-26/21. Formerly Marina Picasso Collection.

**OPP.00:047**

**Profil de femme.** Paris. 1900~1901. Pencil on paper [Reverse of *Etreinte*. 20,7 x 13,1 cm. Sotheby's. #288, L21004, 03/19-26/21. Formerly Marina Picasso Collection.

**OPP.00:156**







**Étude de femmes.** Paris. 1900~1901. Colored crayon & charcoal on paper [Obverse of *Étude de danseuses*]. 15,2 x 23,3 cm. Christie's. #248, 13487, 03/01/17.

**OPP.00:379**

---

**Étude de danseuses.** Paris. 1900~1901. Colored crayon & charcoal on paper [Reverse of *Étude de femmes*]. 15,3 x 23,3 cm. Christie's. #248, 13487, 03/01/17.

**OPP.00:380**





**Étude de femmes.** Paris. 1900~1901. Colored crayon & charcoal on paper [Obverse of *Étude de femmes*]. 15,3 x 23,3 cm. Christie's. #249, 13487, 03/01/17.

**OPP.00:381**

**Étude de femmes.** Paris. 1900~1901. Colored crayon & charcoal on paper [REverse of *Étude de femmes*]. 15,3 x 23,3 cm. Christie's. #249, 13487, 03/01/17.

**OPP.00:382**





**Tête de femme au chapeau.** Paris. 1900~1901. Pencil on paper. 19 x 12 cm. Sotheby's. #56, N09727, 05/18/17. Formerly Marina Picasso Collection.

---

**OPP.00:383**

**Deux amis.** Paris. 1900~1910. Pen & black ink on tan wove paper. 11 x 12 cm. The Art Institute of Chicago. (Inv 2014.1286). Gift of Dr. Irwin Berman in honor of Dr. Laura Berman and family.

---

**OPP.00:384**

